

Housing Proposal for Naroda Patya

The Module

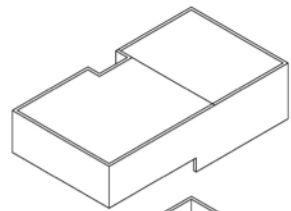
- Total no. of residential units - 88
- 1. 60 sqm module - 44 units
- 2. 120 sqm module - 44 units
- Type 1 - Uniform ground level
- Type 2 - non-uniform ground level

The units are placed together to form an interlocking form. This unit if further repeated to form the housing block.

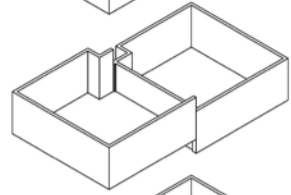
4 housing blocks are placed together to form the housing, these are together connected through connecting more modules.

The existing site has a slope of 2m, being minimum at the centre of the site. Hence that space is further developed to accommodate parking.

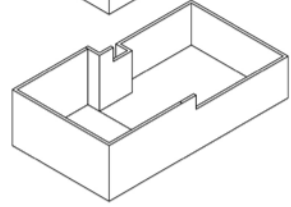
- Total build-up area: 8800 sqm
- Plot area: 5850 sqm
- FAR of the project: 1.5



Module 2
Type 2

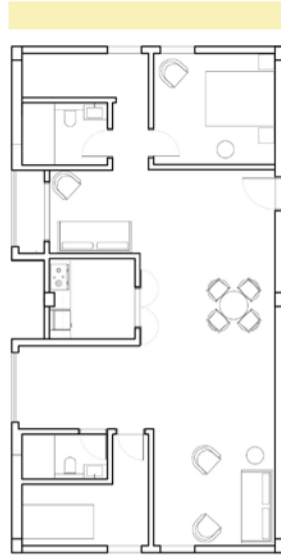


Module 1
(2 Modules placed at a vertical offset of 1m)



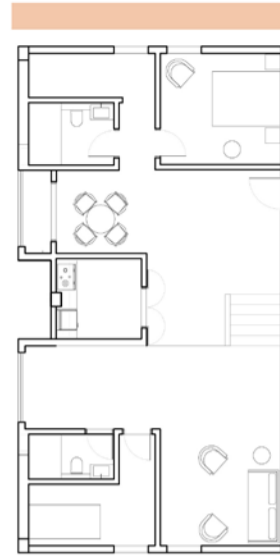
Module 2
Type 1

0 1m 3m 5m



Module 2
Type 1

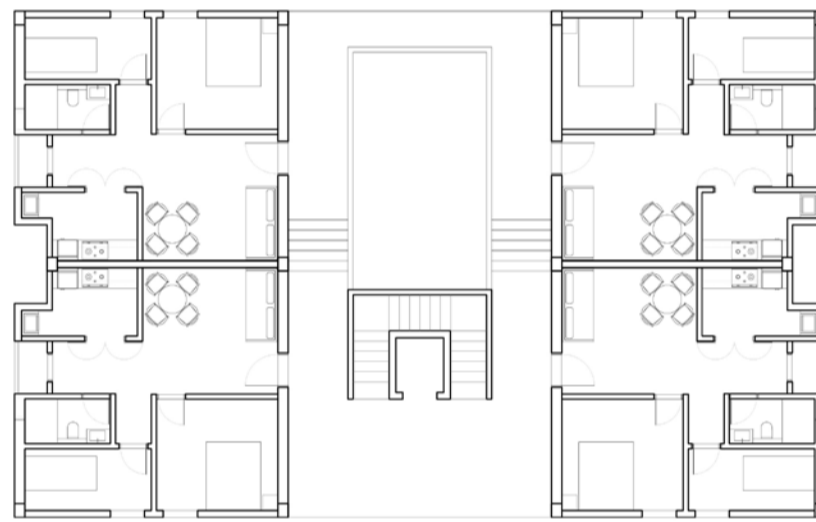
0 1m 3m 5m



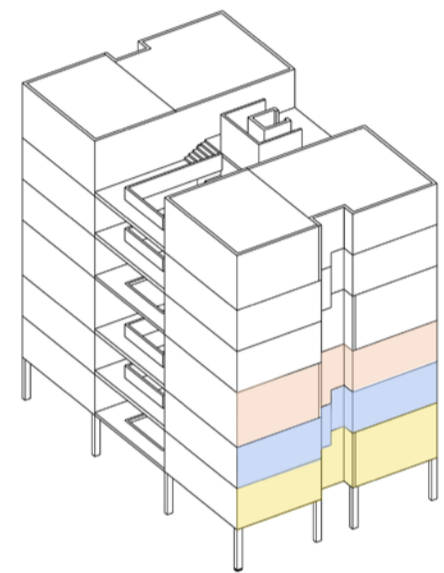
Module 2
Type 2



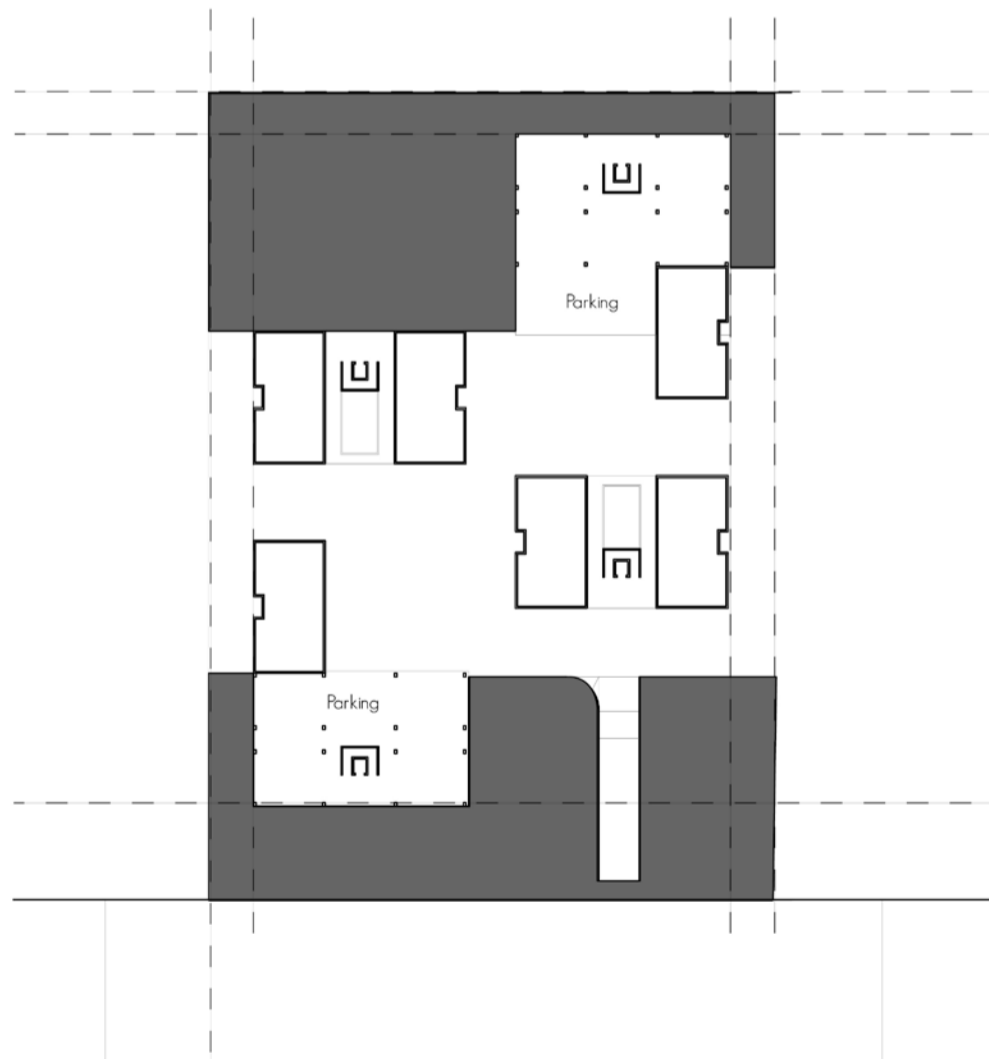
Module 1



0 1m 3m 5m Housing Block



Housing Block



Basement Plan