

Portfolio - Character of a home  
Aishwarya Mahadevan  
UA0416

A fun survey to find the character of a home! Please visit the website to understand the survey and the manner in which it was conducted



Have you ever wondered if your home has a character to it? By character, I mean a set of feelings produced by the home, often setting the mood/ vibe of the place. These feelings are a result of a certain nature/type of physicality of the home and they become integral to a home, they become the idiosyncrasies of a home.

Make your home's profile [press Enter](#)

**Betty, 23**  
15 km away

I hate flowers, you'll never have to buy me flowers. Potatoes chips however... Not gonna lie, pretty good at pub trivia. I've even won the big money a couple times.  
Guilty pleasures, drama, fancy cupcakes, and binge watching Law & Order. Dun duun!

**Eddy, 24**  
21 km away

I love roller coasters but the pirate ship ride completely terrifies me. I once backpacked around Lake Tahoe in 13 days. When I was 14, I got a concussion swing dancing.

I wonder, if there was a dating website for homes, what would it be like...?

Is it stifflingly hot in summer and numbingly cold in winter, deliciously cool in summer and cozily warm in winter, or does it remain at an unyielding, constant temperature year-round?

A peek into the kind of questions asked

Does it contain voices and screams within it or is the whisper of your head across the house? Is it packed with smells or does that your neighbor is cooking... or is it smelllessly devoid of any smell?

Is it a self contained universe that reinforces the boundaries between the inside and outside or does it breach the boundaries and bridge the two?

Does it bear its burdens in stoic silence, embodying the very soul of the word "endurance", or does it groan and complain at each new demand placed upon it?

Is it waiting to be unraveled and discovered, or is it straightforward and simple? Does it provide opportunities to hide and be in isolation or does it let you connect to the sky?

Impenetrable	Open	Rigid
Chilly	Airy	Unstable
Dense	Shell	Cut off
Bright	Porous	Indifferent
Moody	Compatible	Bright
Ventilated	Tolerant	Moist
Dark	Constant	Cozy
Pleasant	Adaptive	Dynamic
Layered	Solidity	Dull
		Translucent

**Delta** The one with the view!  
Location: Far end of a busy city

**Artistic | Understanding | Secure**

**Epsilon** The one with the mood!  
Location: Near a popular bar street

**Stylish | Quirky | Cozy**

**Zeta** The one with the curve!  
Location: Close to the subway

**Cozy | Spacious | Understated**

**Eta** The one with the pattern!  
Location: Close to the subway

**Cozy | Quiet | Balcony**

**Theta** The one with the mirror!  
Location: Sunny | A Mirror wall

**Cosy**

**Iota** The one with the fireplace!  
Location: Close to the subway

**Artistic | Understanding | Secure**

**Kappa** The one with the color!  
Location: Warm | Silent | Red

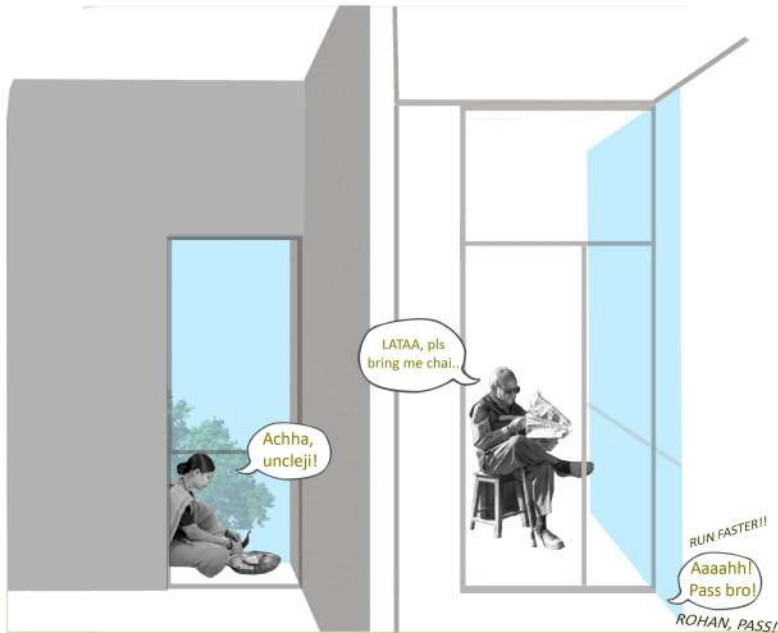
**Warm | Silent | Red**

**Lambda** The one with the view!  
Location: Spacious | too much storage space

**Spacious | too much storage space**

Sample profiles made for the purpose of the survey

Profiles collected from the survey.. how mundane.. :/



The one with talking walls...

Two faced | Porous | Dialogic

I find myself looking at two doors -  
which one should I choose?  
I could greet the unwanted guests,  
but I'd rather sneak into my room

No one can know this secret  
For here's a wall that conceals it  
Little did i know that I'm not alone  
"didi look at me!"

I look across the window and see  
my sister having her own party!

With noises barely contained  
in this house, we shush ourselves  
and notice the guests  
peaking into our fragrant  
kitchen  
Only to see another's eyes  
fixed on them





### House of play

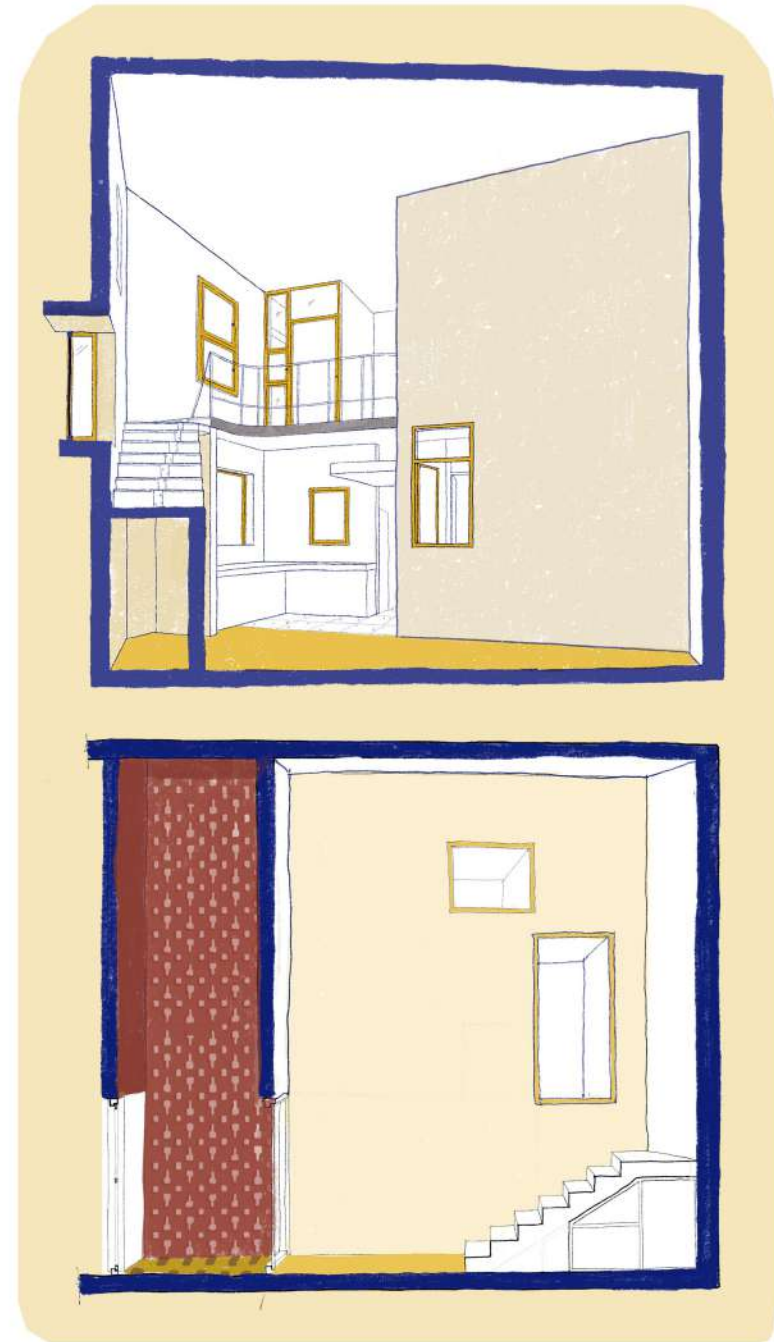
World within a world | Playful | Unreserved

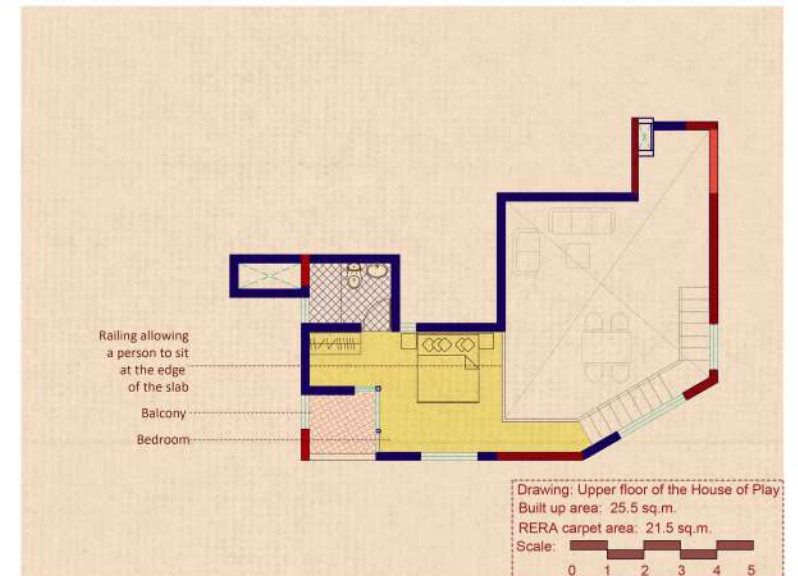
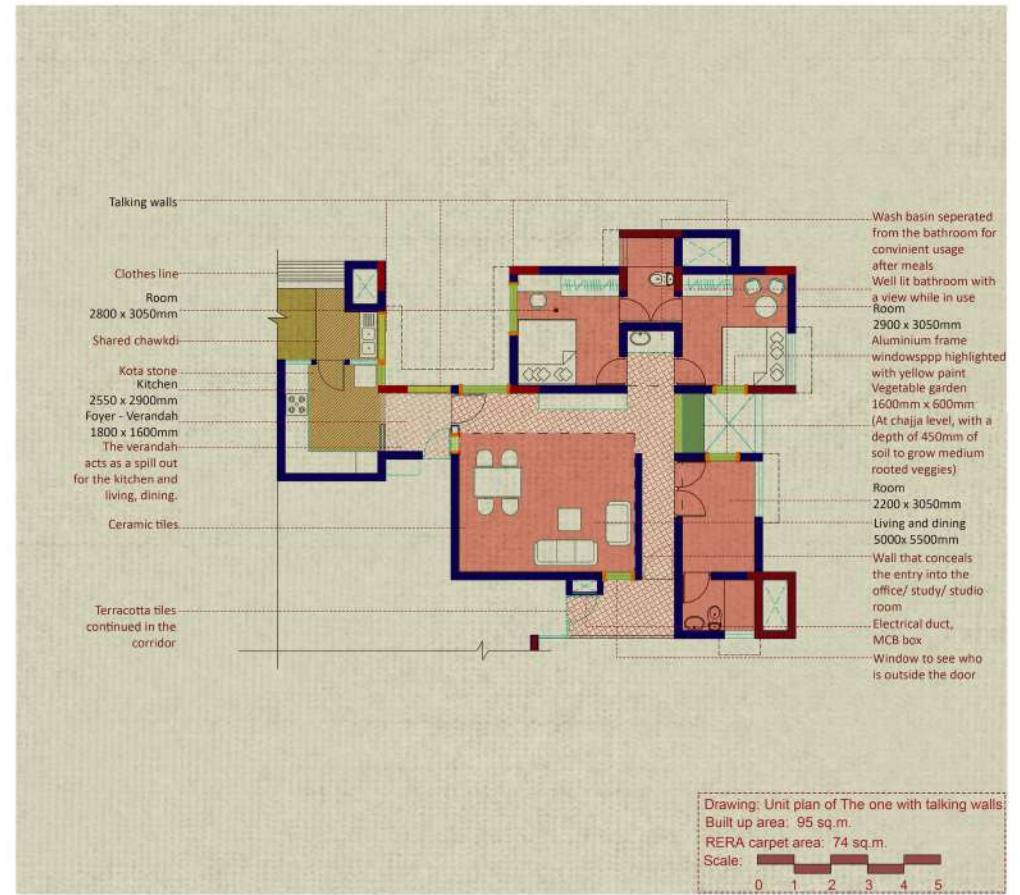
Welcome to the house of play,  
a play on the house of cards  
where everyday feels like the month of May  
because finding brightness is not so hard

Can you imagine what fun it would be to be sitting  
somewhere on a tall wall, looking up at the sky  
Or a cozy corner on the base  
when you're happy or shy

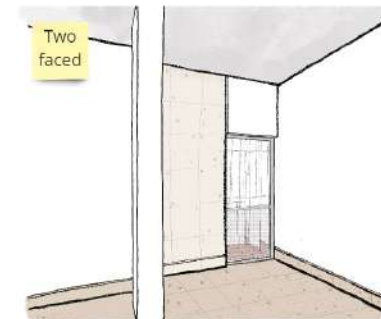
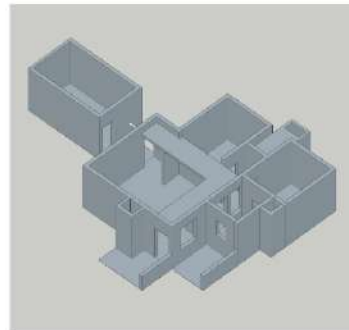
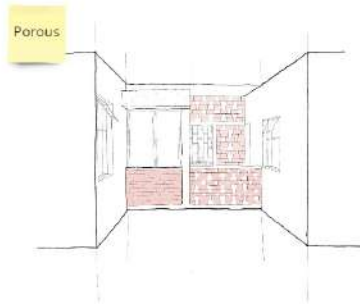
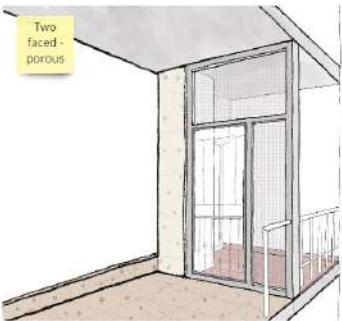
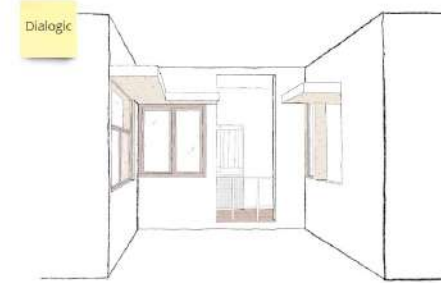
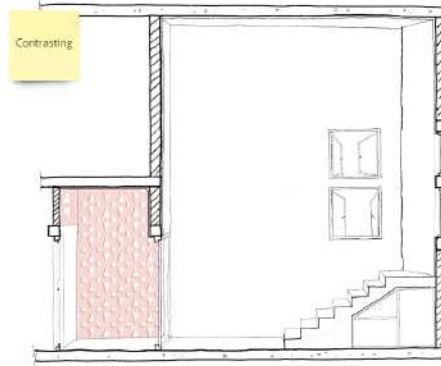
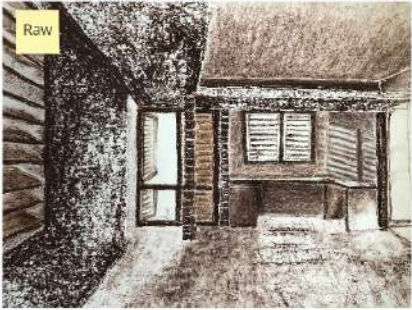
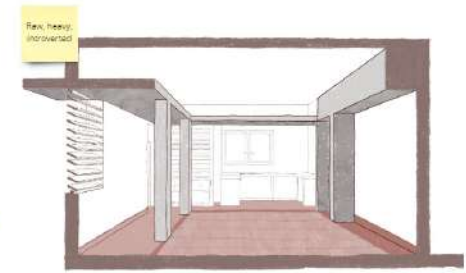
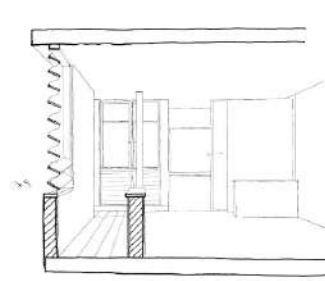
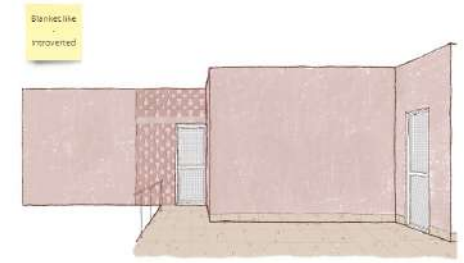
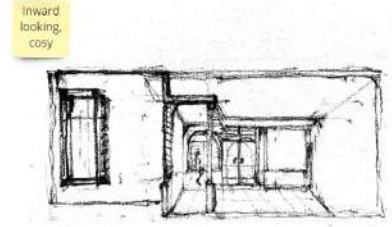
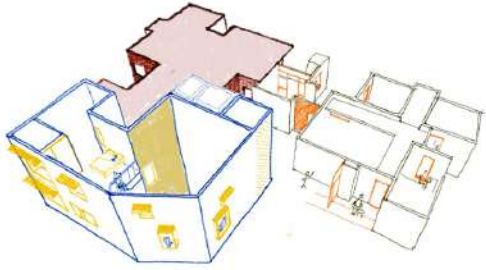
Some would call it eccentric because of the  
strangely placed and sized and colored windows,  
or that the bedroom, being the most "private space"  
has no walls, but it's cheerfulness is like that of snow.

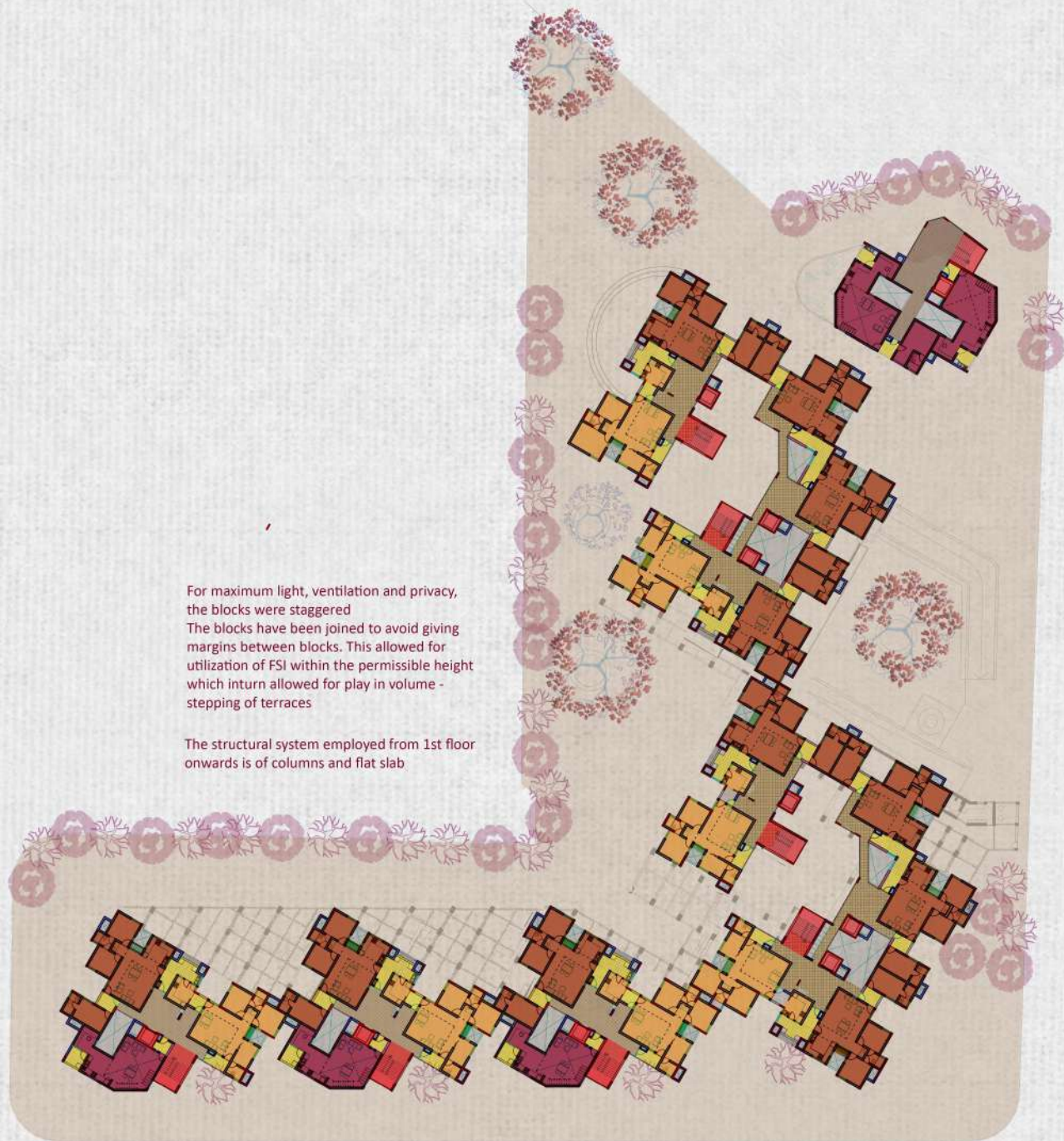
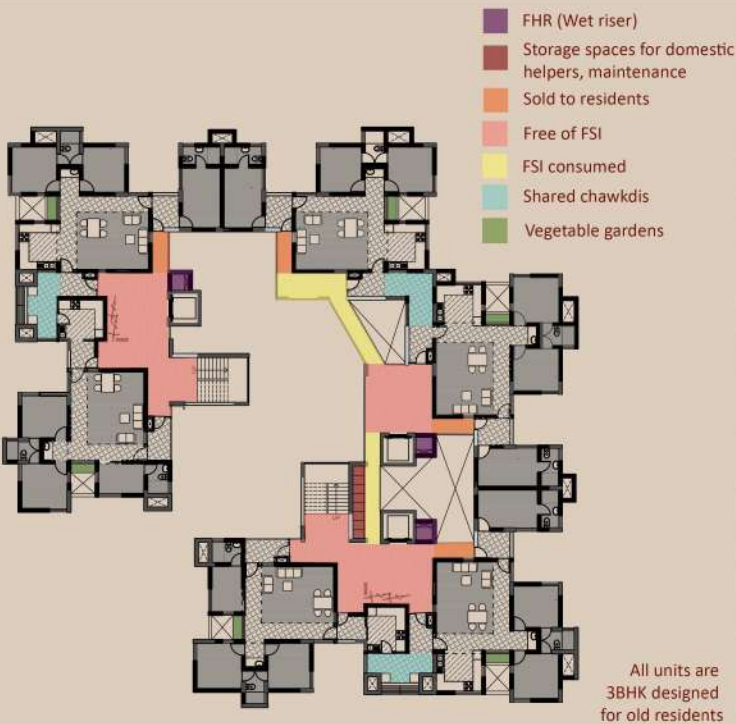
The darkness in the foyer space is contrasting but calming  
and a relief from the brightness of the home from within.

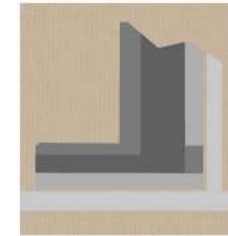




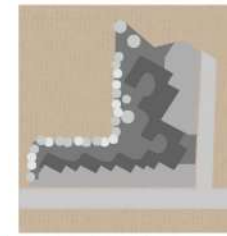
# Character explorations



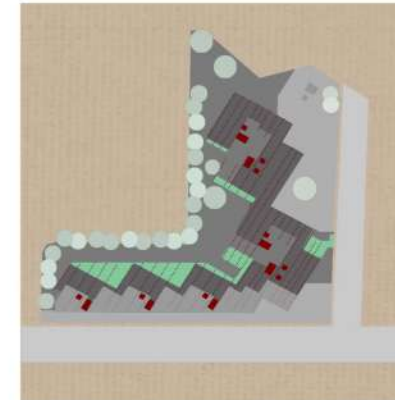




Megablock divides the site into 2 edges



These have been characterised distinctly as a sharper, public edge and a blur, contained green edge



Vierendeel girder is employed on ground to resolve parking in the basement. The blurr green edge is enhanced through these girders that extend out as pergolas with bushy rangoon creepers. The girder and circulation core are directed towards this contained, inner edge.



The extroverted public edge is more porous, allowing for multiple access points on the longer edge for commercial spaces. The corner of the site is freed for street vendors. The mandir and cafe are placed on the other edge.

Drawing: Ground floor plan

Scale: 1:100



