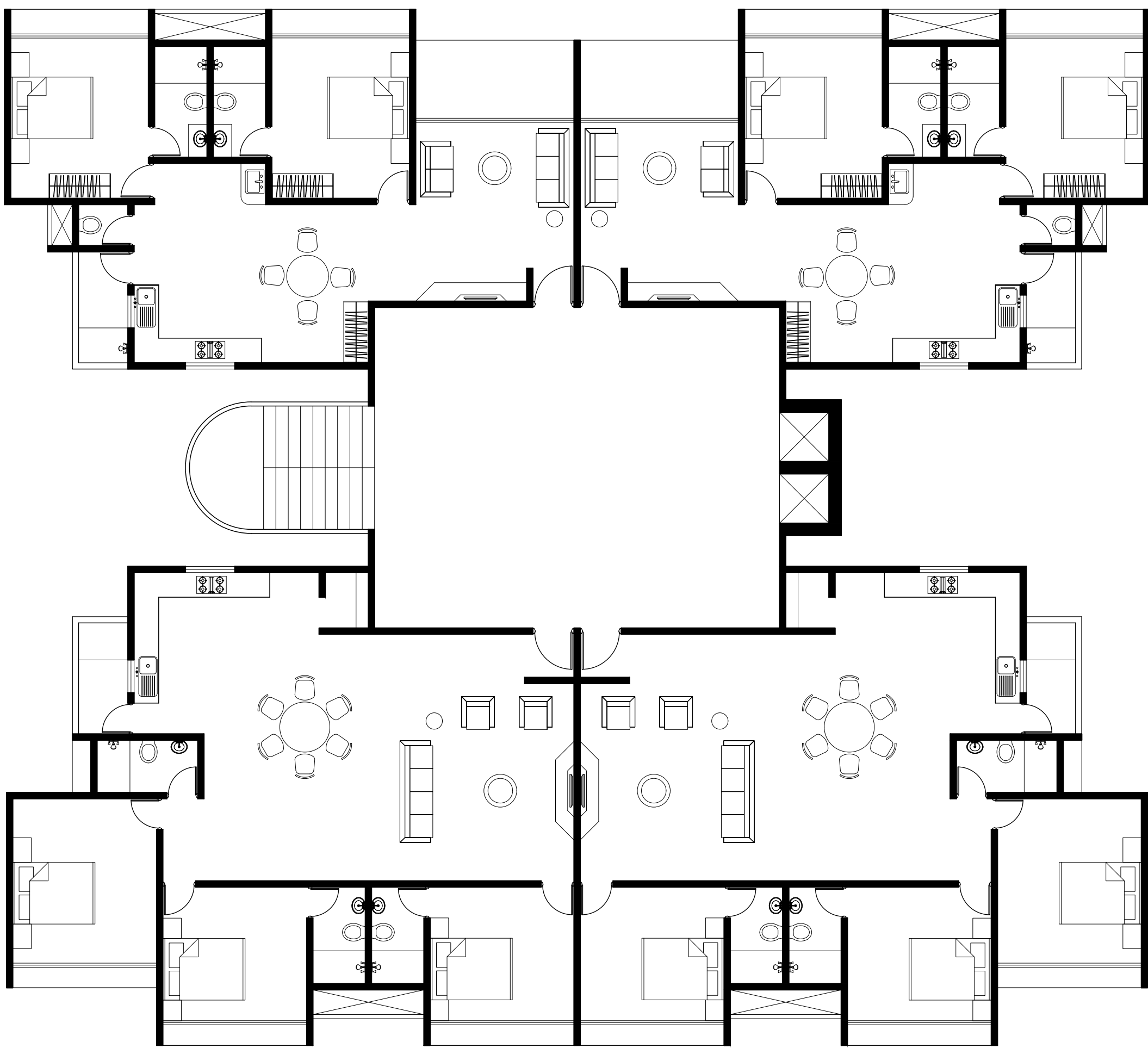


30m wide road proposed  
in Bopal TP Scheme 1

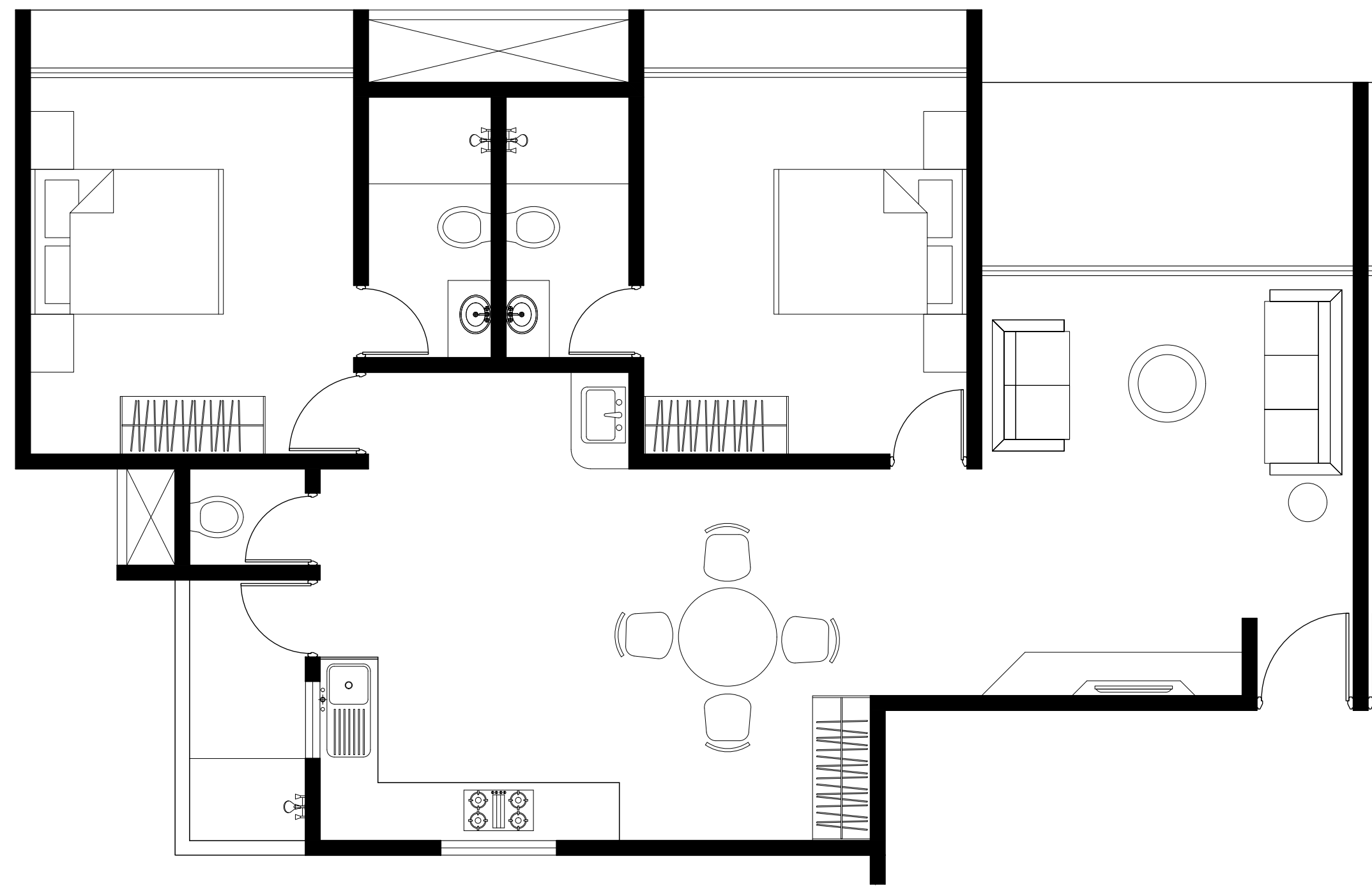
Site Plan  
1:200

AREA CALCULATIONS

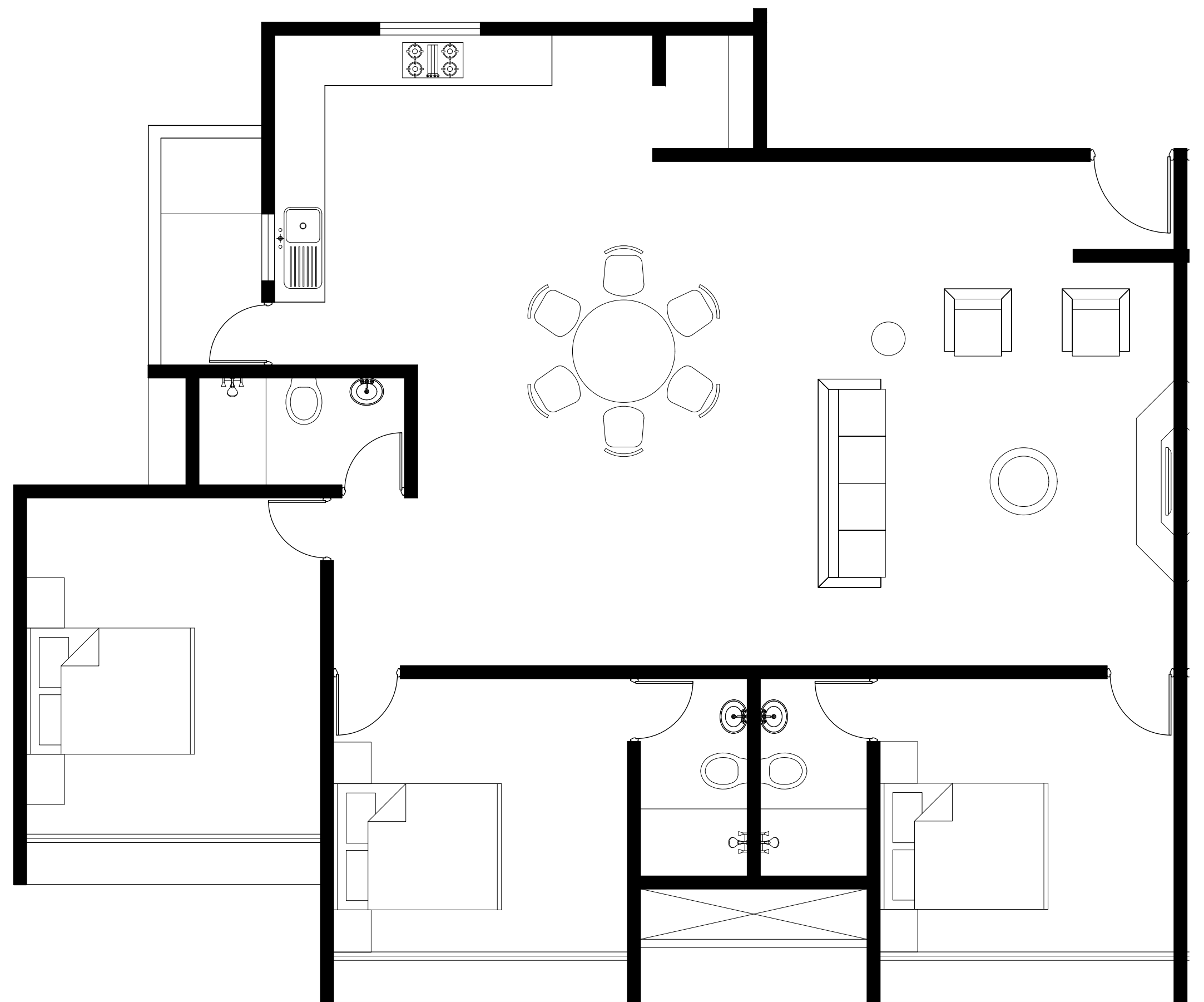
- 2 BHK unit Area (super built area) - ~~129.9~~ 99.3 sq.m.
- 3 BHK unit Area (super built area) - 129.9 sq.m.
- Building unit Area (each floor) - 547.17 sq.m.
- FSI consumed - 1.8
- (1.2 + 0.8)
- No. of floors - 7 floors.
- Total units on each floor - 4 units
- Total units - 2(2BHK) + 2(3BHK) = 28 units (14+14)
- Total Super built up area = 3830.19 sq.m.
- Common plot = 200 sq.m allocated out of which 50 sq.m used for parking



Building Unit Plan with two 2BHK units and two 3BHK units on each floor  
1:100



2BHK Unit Plan  
1:50



3BHK Unit Plan  
1:50

