

WOVEN STOREYS

PORTFOLIO - OIKOPOLIS: A NEW HOPE | MONSOON SEMESTER 2022

TUTORS - PROF. VISHWANATH KASHIKAR | AAKASH JAIN

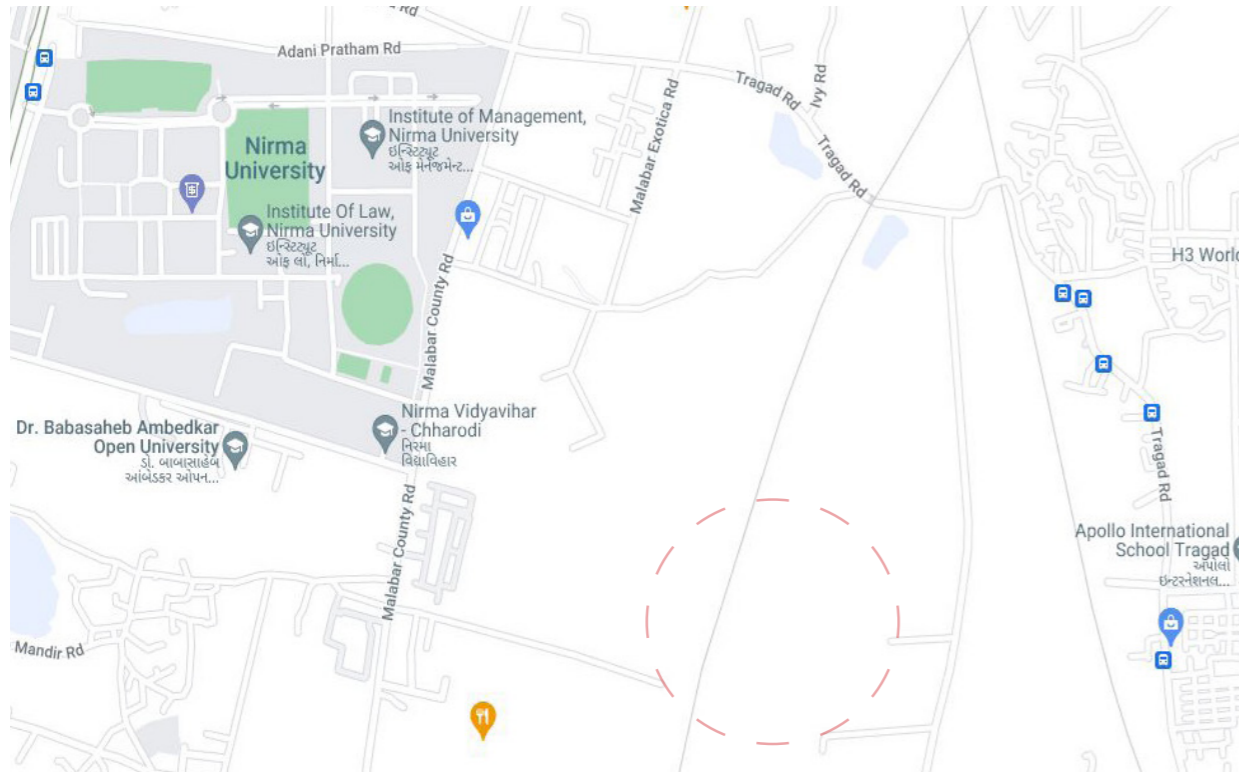
RITIKA DOJODE | UG180511

WOVEN STOREYS

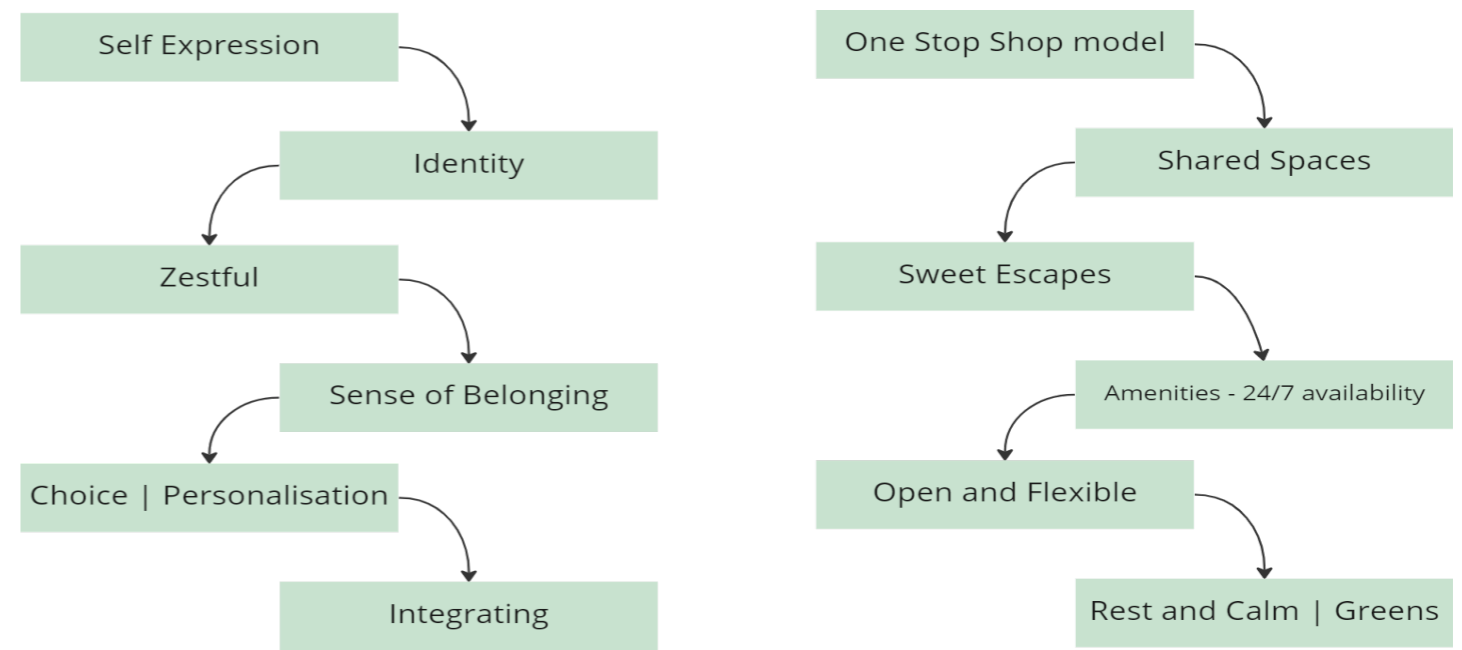
Housing for students and working youth on rental and ownership basis respectively. Designed with the intention to form spaces that could feel at home, away from home. The shared spaces, amenities and commercialised systems in place allow for familial bonds and aid in forming an enriched community under the umbrella of a created microcosm. The idea is to provide for space for a very flexible and dynamic user group that are looking for a place that could suffice needs as well as provide for spaces that hold potential to create meaningful experiences and memories. Shared spaces give opportunities to interaction within the community as well as prove to be inclusive of those in the neighbourhood. They provide this vibrant community with spaces to which they can look and come back to, call it their own and weave stories at, with one another.



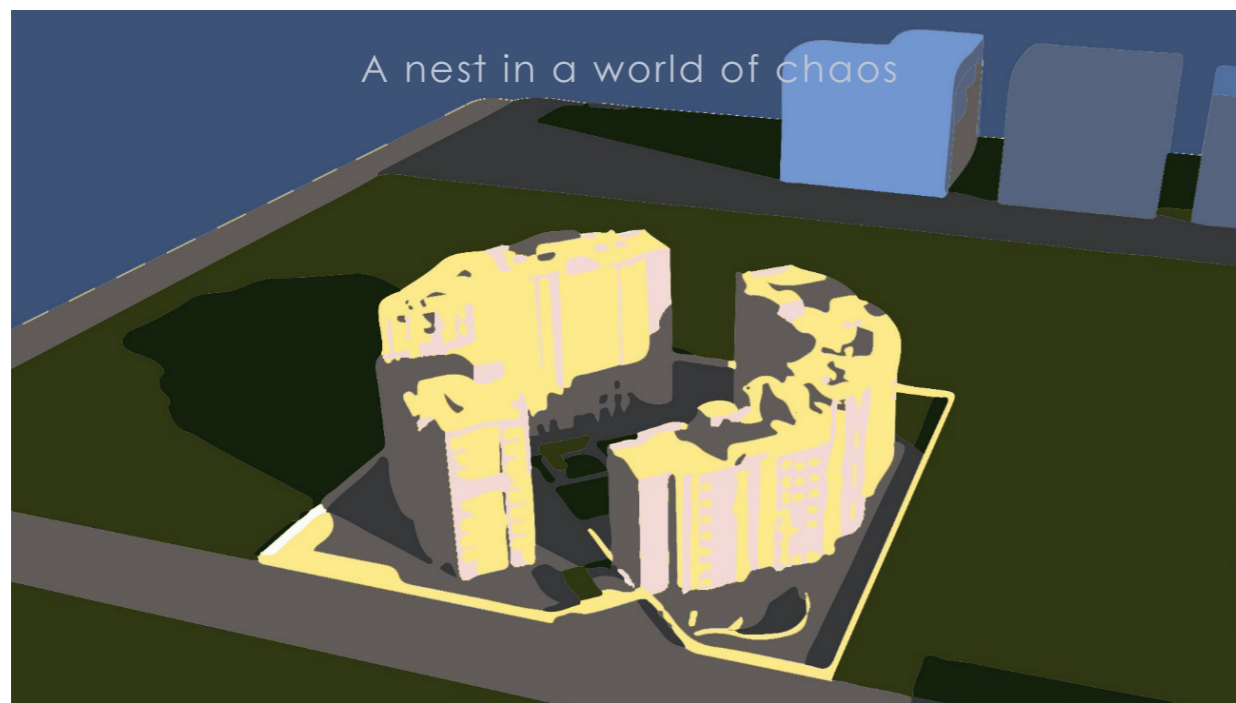
SITE AND USER GROUP



Close proximity to educational institutions led to the addressal of the user group - students and bachelors where co-living through shared spaces is accommodated.



The idea is to provide for space for a very flexible and dynamic user group that are looking for a place that could suffice needs as well as provide for spaces that hold potential to create meaningful experiences and memories. Shared spaces give opportunities to interaction within the community as well as prove to be inclusive of those in the neighbourhood. They provide this vibrant community with spaces to which they can look and come back to, call it their own and weave stories at, with one another.



WORK - LIFE BALANCE

| In the juggle between work and life scenarios the need to find an escape, something to come back home to feels more than a need. at, with one



The idea is to provide for space for a very flexible and dynamic user group that are looking for a place that could suffice needs as well as provide for spaces that hold potential to create meaningful experiences and memories. Shared spaces give opportunities to interaction within the community as well as prove to be inclusive of those in the neighbourhood. They provide this vibrant community with spaces to which they can look and come back to, call it their own and weave stories at, with one another.

This links to a short research on dining and associated spaces in indian homes

SHARING MEALS, ARE WE?

We have deep rooted relations with food, cuisine, associated cultures. The making of this substance of value, food is a celebration in itself. Food brings together people.

Hypothesis	The idea of eating together, sharing a space together to talk about their day is diminishing due to societal changes. The modern housing is adding to this disparity and not helping in enhancing familial relationships - expanding into dine-liv
What led to this study	Observing the trend where dining room is not a room, rather a piece of furniture in a corridor, this is what it has been reduced to now.
An observation	A family's internal relationship is highly reflected by the working of their dining space
Data Collection	Studying and comparing house plans, Asking people about their dining activities and spaces
Why this study	To allow apartments to be more than 4 dead walls and rather evoke a sense of calm and bonding, thus making it a home

The quest led to further questions,

- What purpose did a dining space provide?
- What if the Corridor is developed into something meaningful, more than a piece of furniture?
- Do we need a space that captures the essence of this memory?
- Will evocative spaces help the people hold ground/ make memories over?
- Could a house designed now, adhere to the changing cultures and make room for calmer, peaceful spaces over which the housed family can bond?

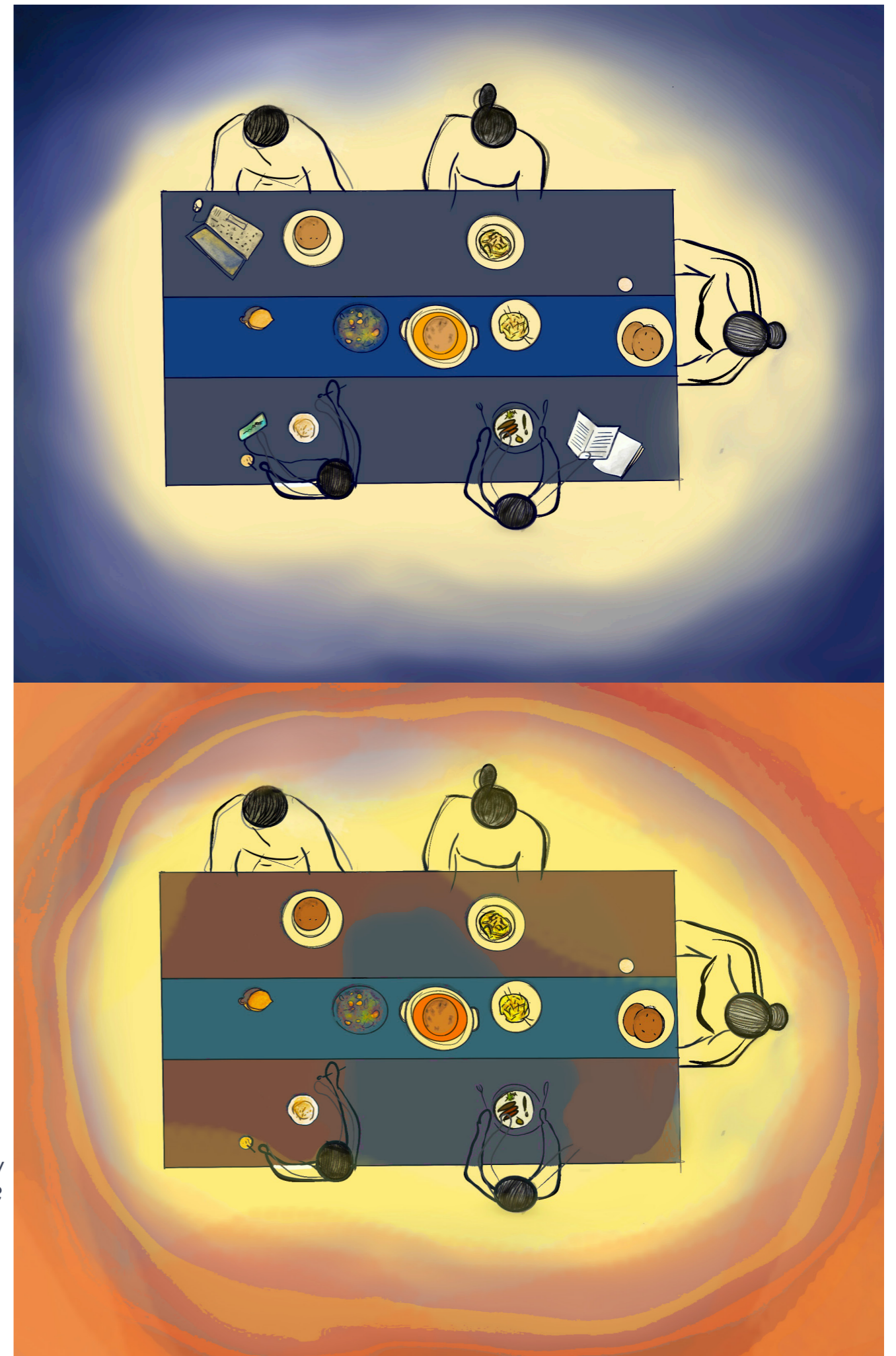
Could the HOME provide an ESCAPE, a blur from the fast – life outside?

Are we? Everything seems so distant, seated next to each other but we cant speak, busy with our lives but no one to talk about it to! Everyone is under the same roof yet seated apart.

Explain to me, your dining room, does it hold any specific character? When there is so much an act like eating together can do, should we need a space that allows for more such opportunities rather than reducing it to something very bare, a raw corner that might feel exposed and vulnerable?

Are the existing dinings evocative? Are they evocative enough that they allow for meaningful time, conversations, nudges and blurring of boundaries? Does the place allow to make it echo with aromas or does it feel like an audio, olfactory, visual clutter, crashing down at you all at once? Is it expelling human touch, allowing the members to resort to non-existing individual niches in their homes?

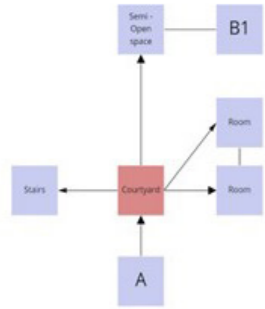
Where does the family here stand? How strong are their bonds? Do they know if someone excelled or if one is going through something difficult? Are they alone in a building crowded with people, all screaming for bonding time and space but cant seem to find anywhere near? Could designing for dining spaces provide for much needed change from the mundane routines?



COMPARING PLANS

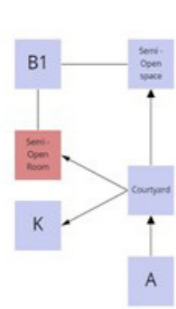
Traditionally, Indian homes of the past housed within large verandahs and small kitchens, accompanied with semi-open seating spaces where people can gather.

House in Central Plateau



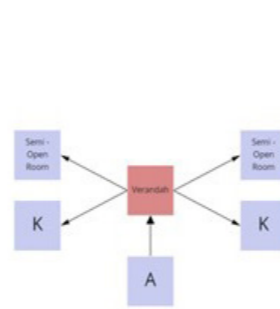
D - adjacent to K (D - K)
D - Leads to Rooms

House in Rajasthan



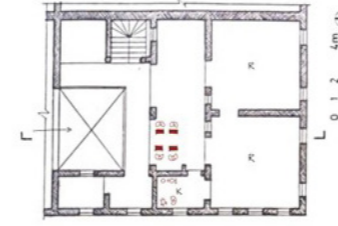
D - adjacent to K (D - K)
D - Separate room, not a part of main Circulation

House at Saurashtra coast



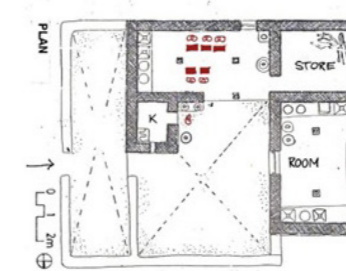
D - adjacent to K (D - K)
D - Leads to Rooms

House in Central Plateau



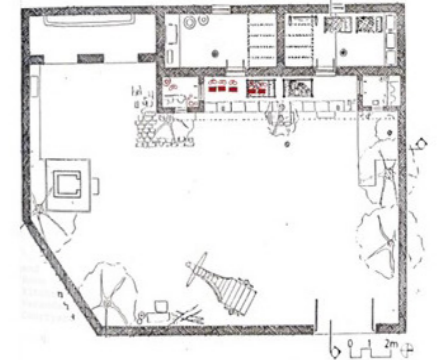
D - adjacent to K (D - K)
D - Leads to Rooms

House in Rajasthan



D - adjacent to K (D - K)
D - Separate room, not a part of main Circulation

House at Saurashtra coast

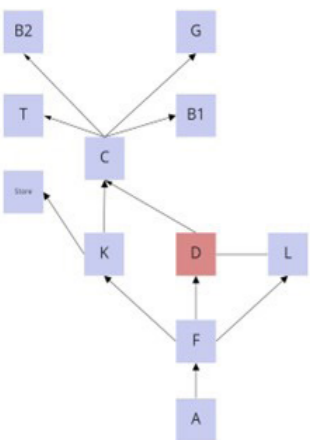


D - adjacent to K (D - K)
D - Leads to Rooms

Semi - Open flexible spaces for dining,
placed adjacent to kitchens
Large courtyards, small kitchens

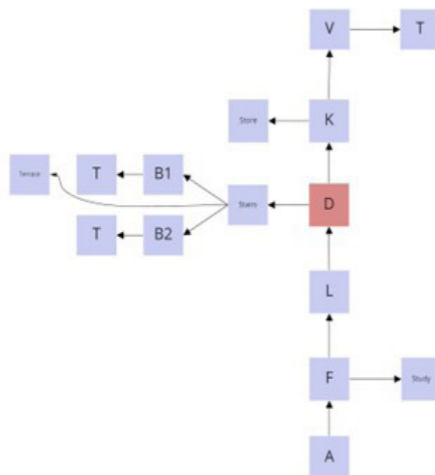
Plans from late 1970s to 80s have gradually shown on how dining table is placed in the then modern homes

LIC Township, Y - 1973 - 76



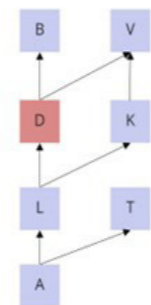
D clubbed with L (D - L)
D - a separate designated area
D branches into other rooms

Jai Shefali Park, Y- 1974 -78



D - Independent (L - D - K)
D - separate designated area
D clubbed with multi-volume branching

Staff Housing for Atira, Y-1984 pg 100



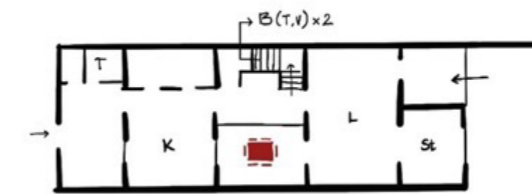
D - clubbed with K (D - K)
D - Sublet of K
D - Leads to Room

LIC Township, Y - 1973 - 76



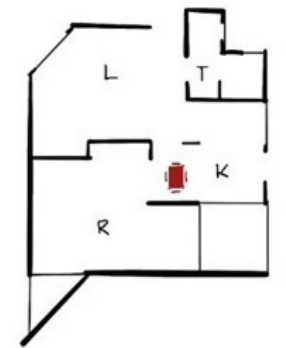
D - a separate designated area
D branches into other rooms

Jai Shefali Park, Y- 1974 -78



D - Independent (L - D - K)
D - separate designated area
D clubbed with multi-volume branching

Staff Housing for Atira, Y-1984

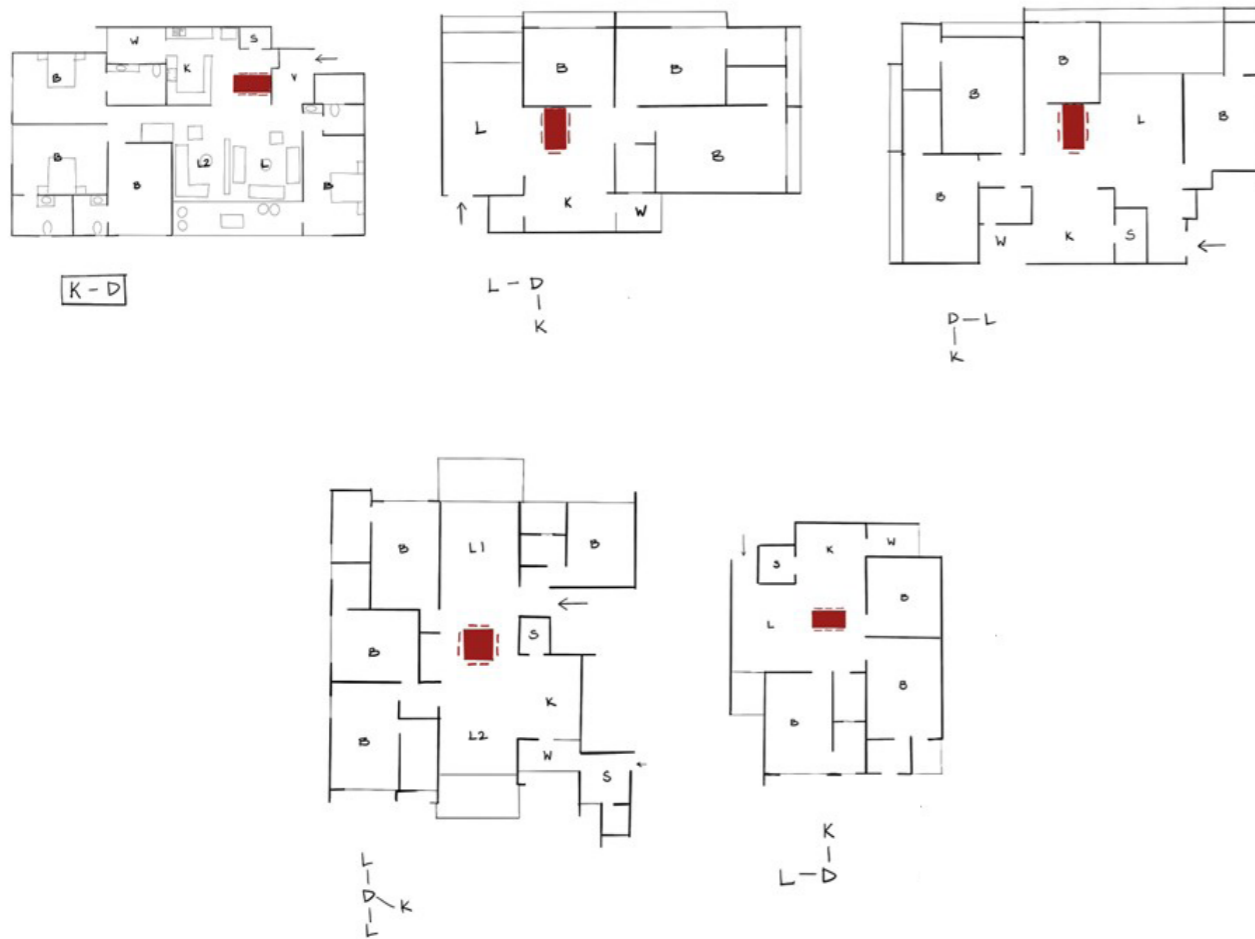


Transforming from an independent room into a sublet

D - clubbed with K (D - K)
D - Sublet of K
D - Leads to Room

Dining rooms exist, leading to other rooms.
Larger courtyards, kitchens, living and dining
or similar room sizes

Plans of upcoming residences in ahmedabad (2020s)



Dining rooms exist, leading to other rooms
 Larger courtyards, kitchens, living and dining or
 similar room sizes
 Corridor – sublet - neglected

Here, the dining spaces are designed to be more and more of an extended corridor. It is rather a space as an outcome from designing other spaces, devoid of a position of its own, lacking walls and windows, lacking ventilation, light or any featuristic spatial qualities. The result is a dining as a sublet of either a Living or a Kitchen.

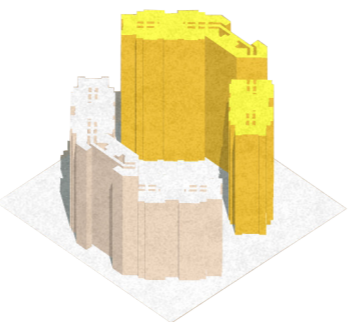
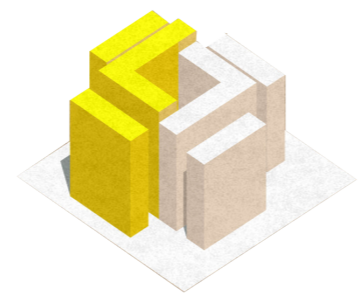
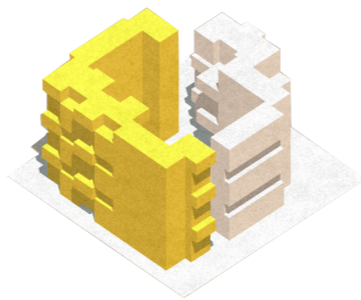
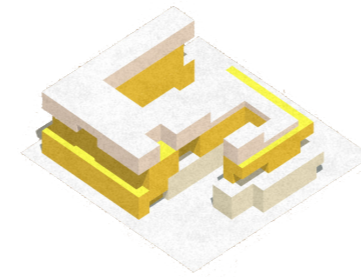
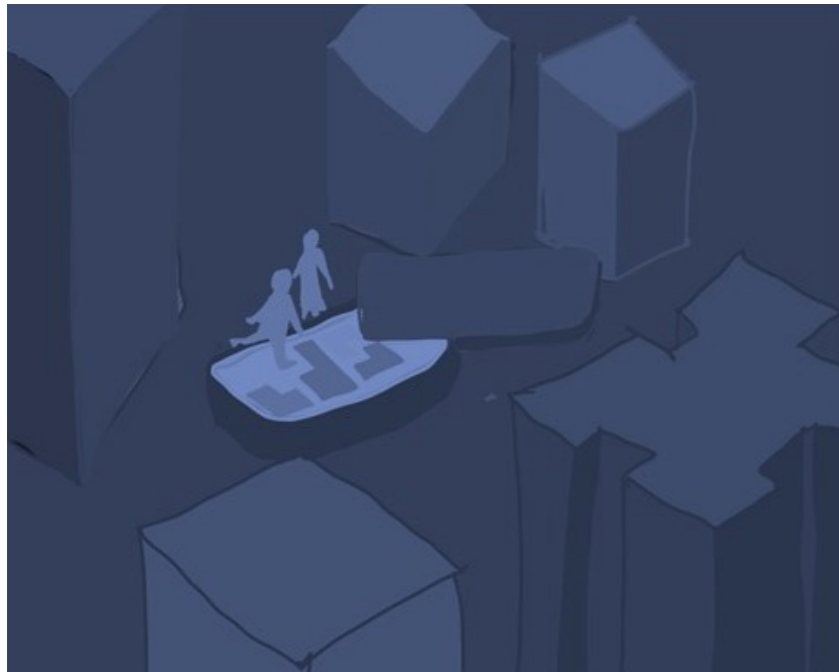
Dine and Memory



I have very vivid memories of grandma calling us all for food when its about lunch time, I would leave my assignment then and there, rush down the stairs and sit down on the cool, deep red flooring. That kitchen of her's is pretty small, unlike the quarrel in deciding who gets to sit beside another, in that tiny space. She wiping the steel plate with her saree, shining against the dark room, against the flames from the stove beside her, sets up the atmosphere. Huge utensils filled with saaru, korma, meatballs, rice and what not is just a beginner. A little sacrifice, a little nudge from that aunt of mine, another aunt killing it with the intense conversations, my sister and I with beaming eyes looking at each other while ajji cuts through thin slices of that juicy mango, Oh gosh, I wished I was there when I was writing this down. Well, you all would've missed up on my little presentation so I decided to skip it for later.

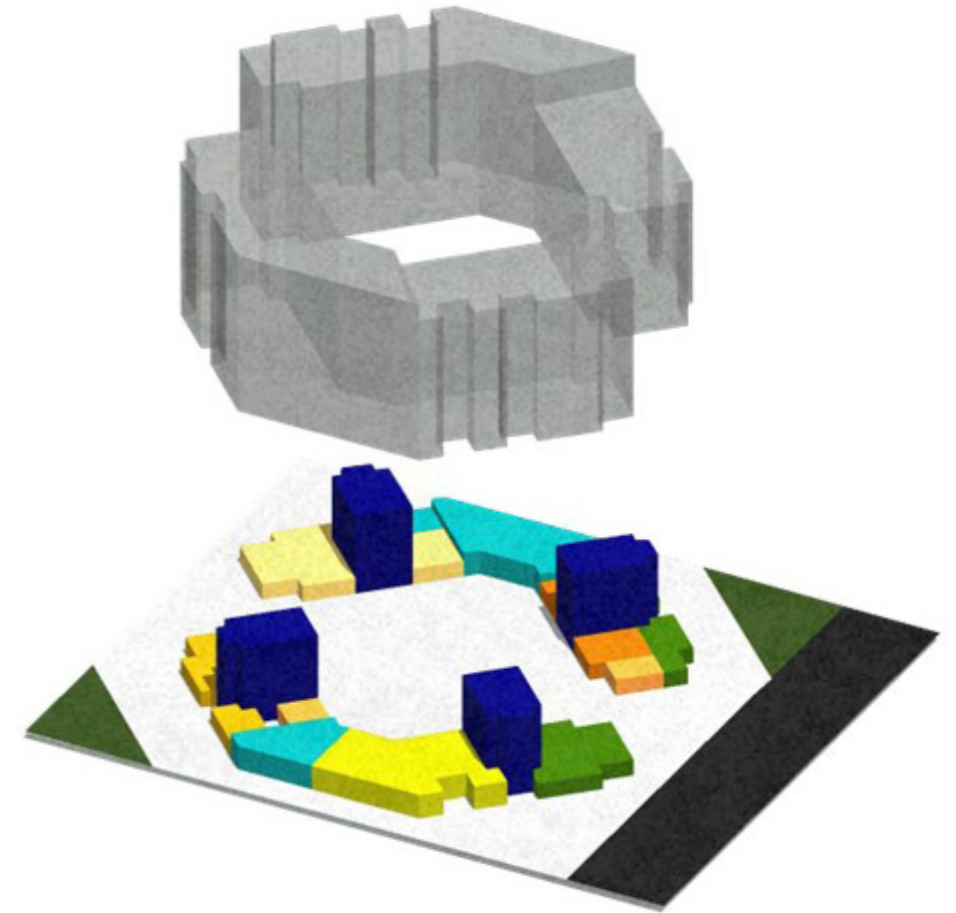
A MICROCOSM

Following the principles of a one stop shop mode, the idea is to create an integrated whole, a world where all the things that might be in probable need and necessities of the group of students and working youth, are available under one roof. They need not have to travel to places searching for a laptop repair shop at an odd hour of the day, or say have the availability of drop in laundry systems at every floor.



Form Development

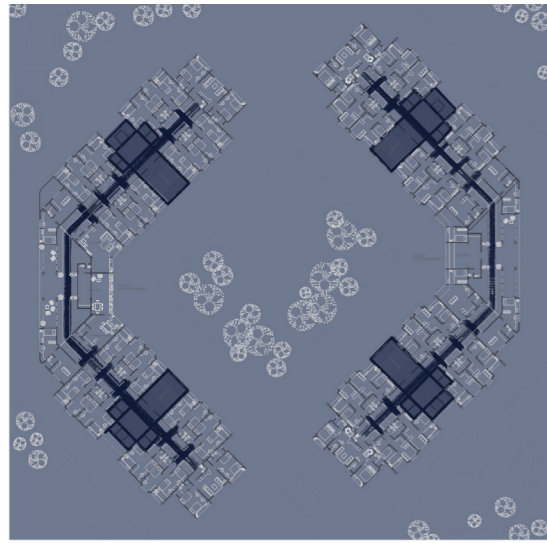
Massing on ground floor



- Commercial - Stores - tech/stationery, tea stalls, med facilities, etc
- Commercial systems -Canteen, studios and workspaces, library
- Management + Services - security, maintenance, system organizers
- Private Workspaces / Studios
- Amenities - Library, Theatre, Gym, etc
- Residences - for students and working youth

ZONING

Site



— Circulation



■ Open to Public
■ Private

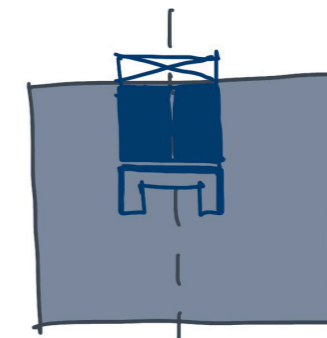
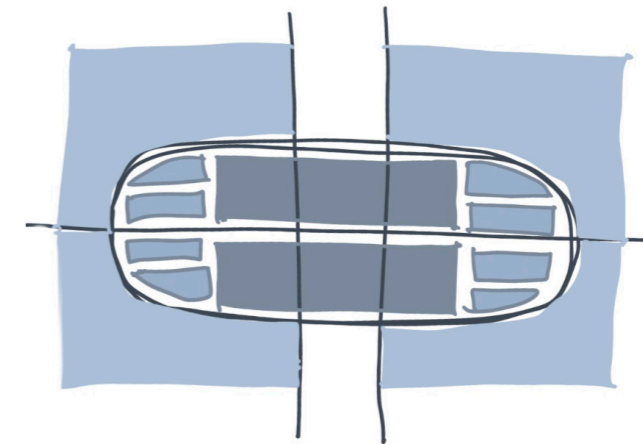
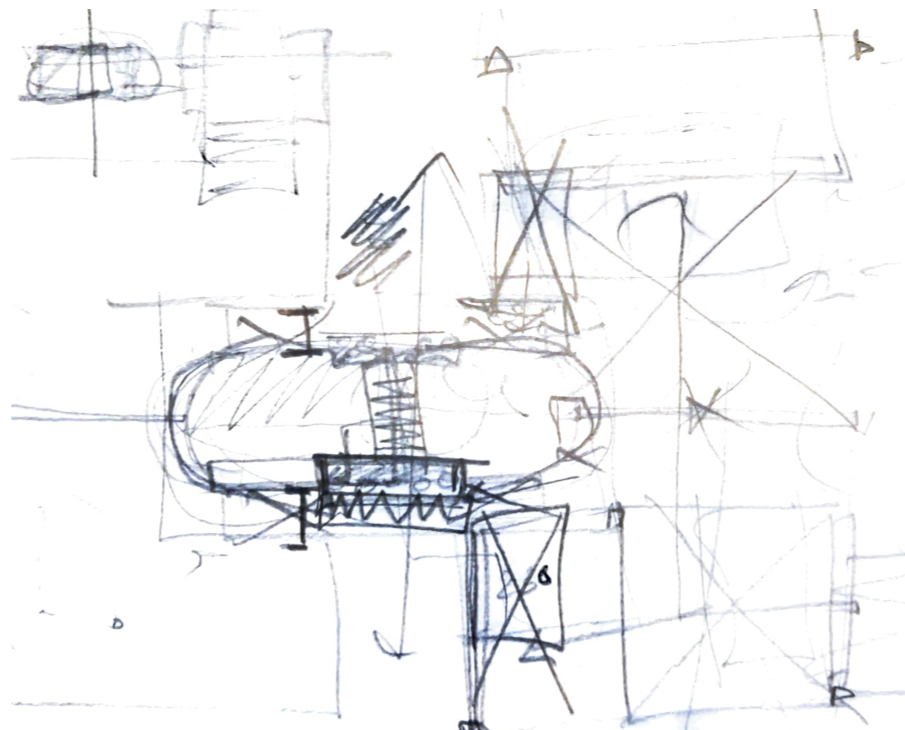
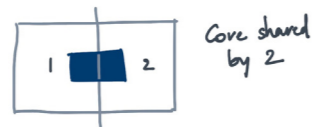
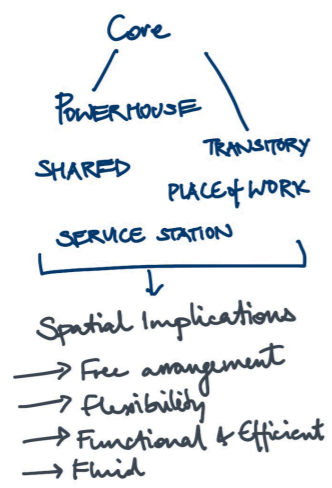
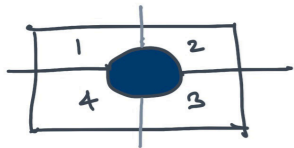


Ground modulation on 4 corners and response of the built

Units

CORE

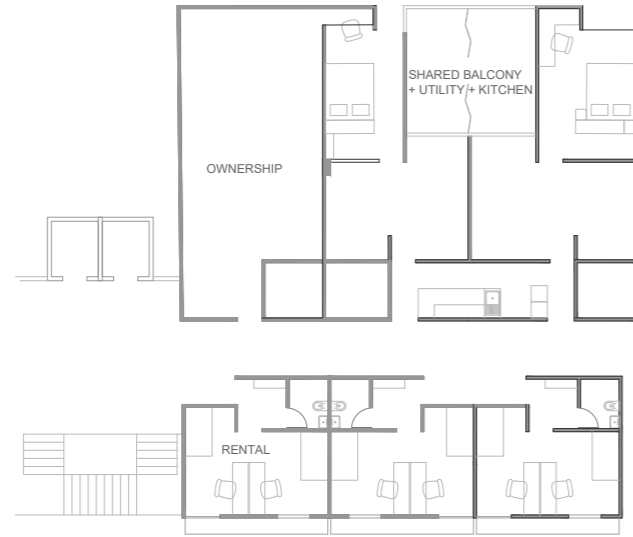
- Services at 1 spot
↳ K + T + Utility
- For ease of servicing
- Free PLAN
↓ flexibility
- Shared Services → Affordability



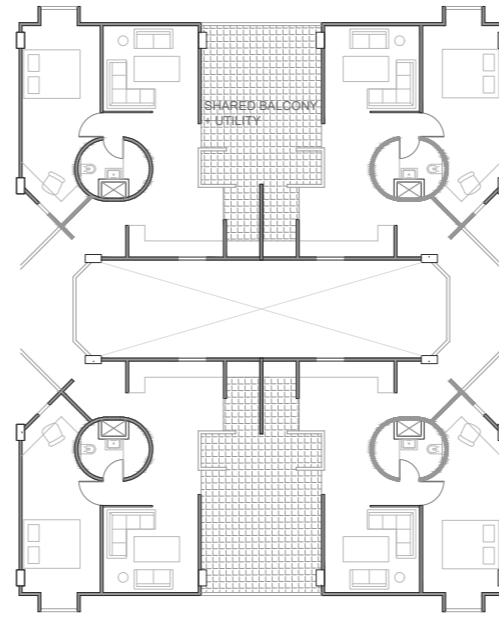
Cores being shared amongst units for easy maintenance flexibility and affordability

UNIT DETAILING

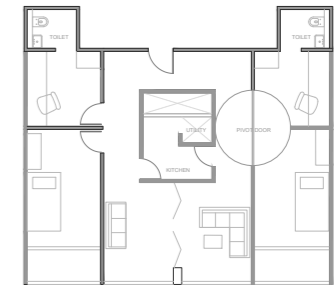
Process



Units for working youth and students next to one another



Units with spaces overlooking into adjacent, sharing flexible balconies



Pivot door acting as a partition between shared and private spaces

Designed Units



CARPET AREA : 64 M2
Shared area : 27 M2
SHARED UNITS FOR BACHELORS

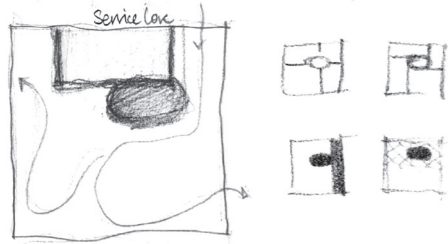


CARPET AREA : 34.6 M2
SHARED UNITS FOR STUDENTS

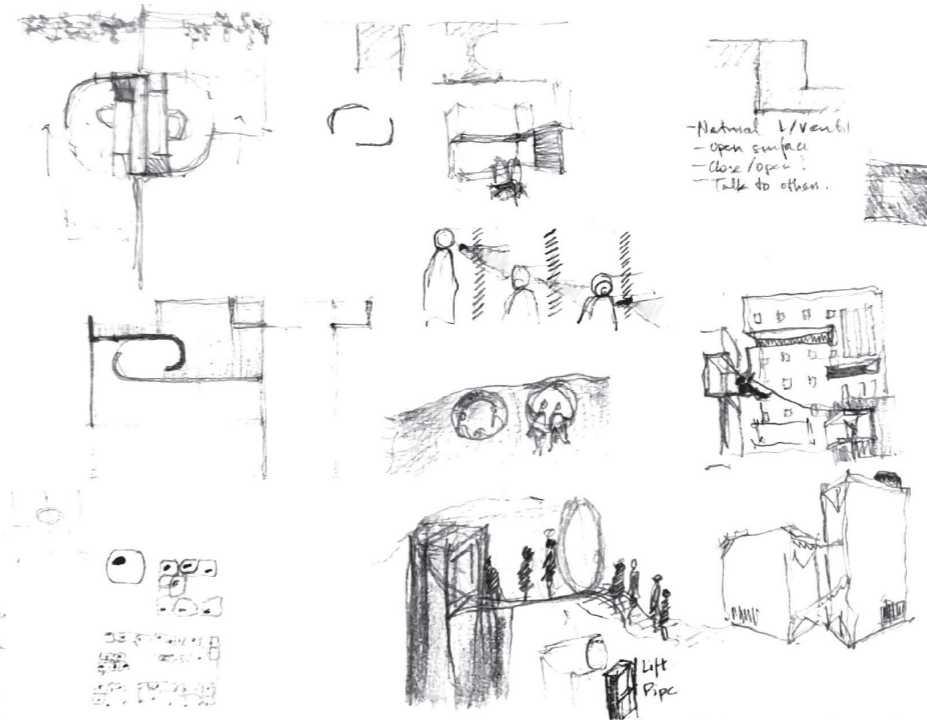
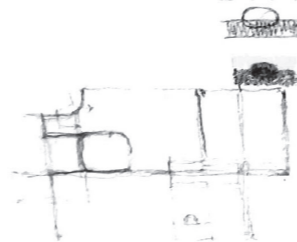
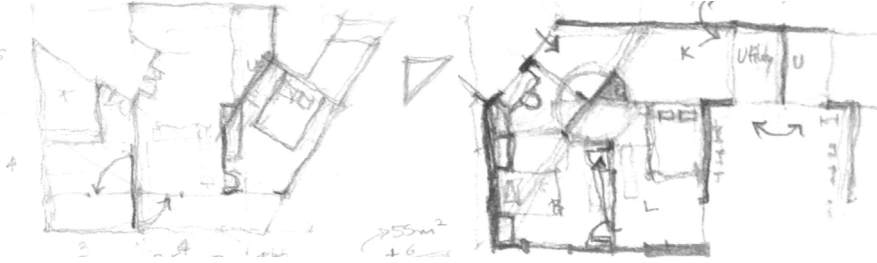


CARPET AREA : 33 M2
UNITS FOR BACHELORS

PROCESS

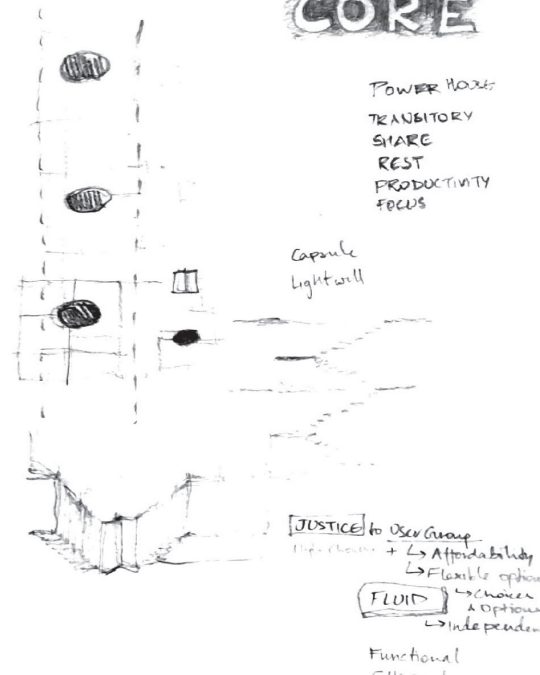


Central Core

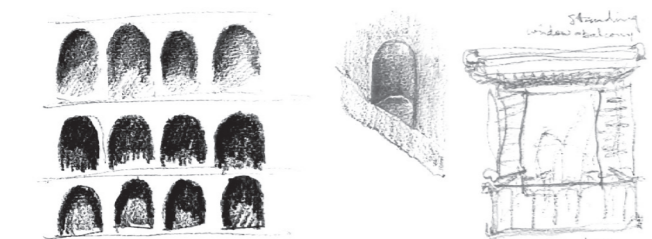
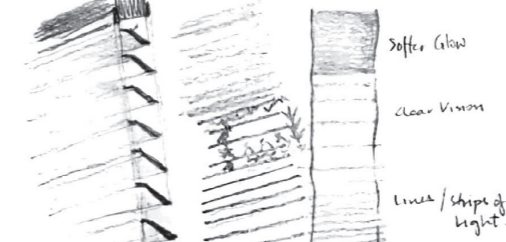
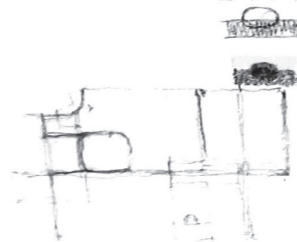
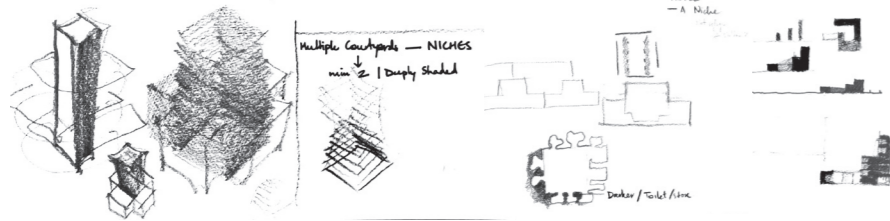
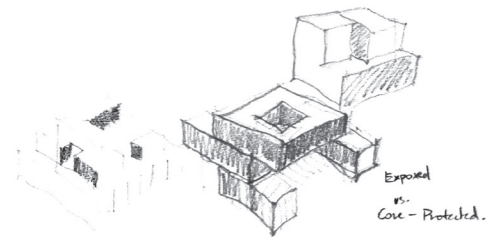


CORE

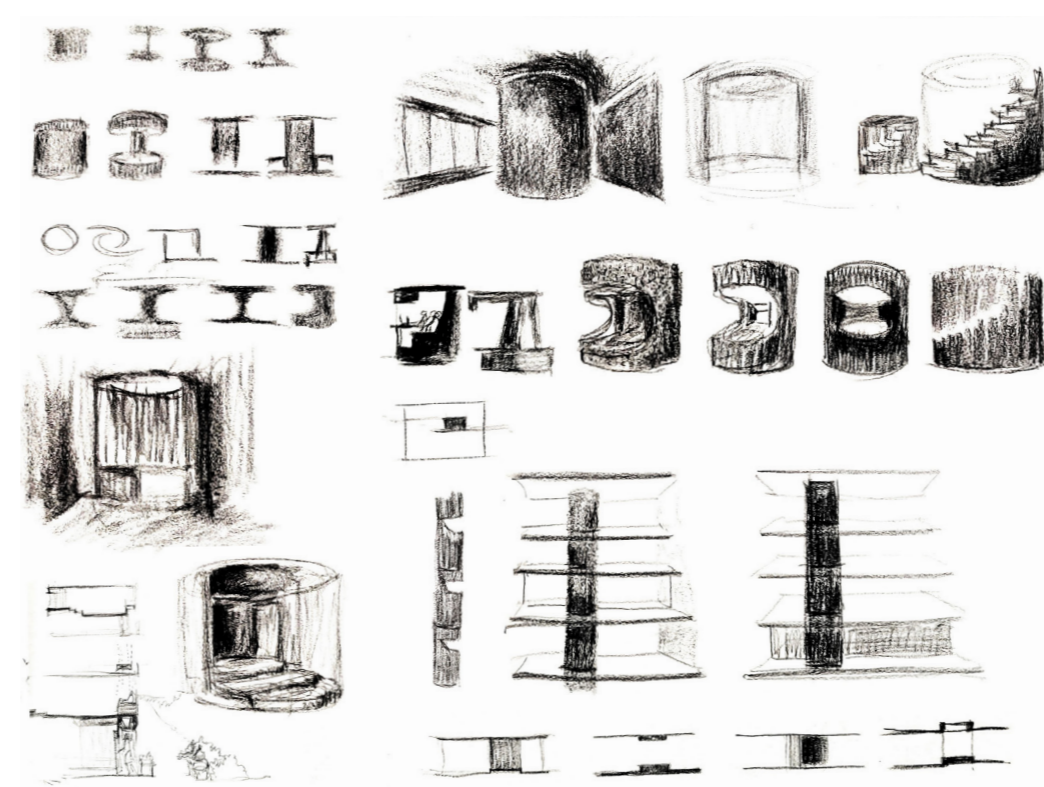
POWER MAX
TRANSITORY
SHARE
REST
PRODUCTIVITY
FOCUS



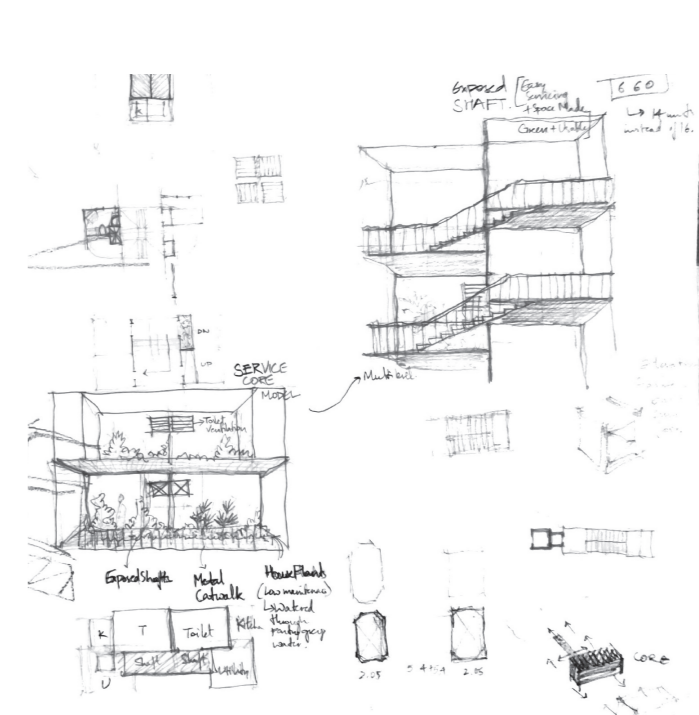
Volume play



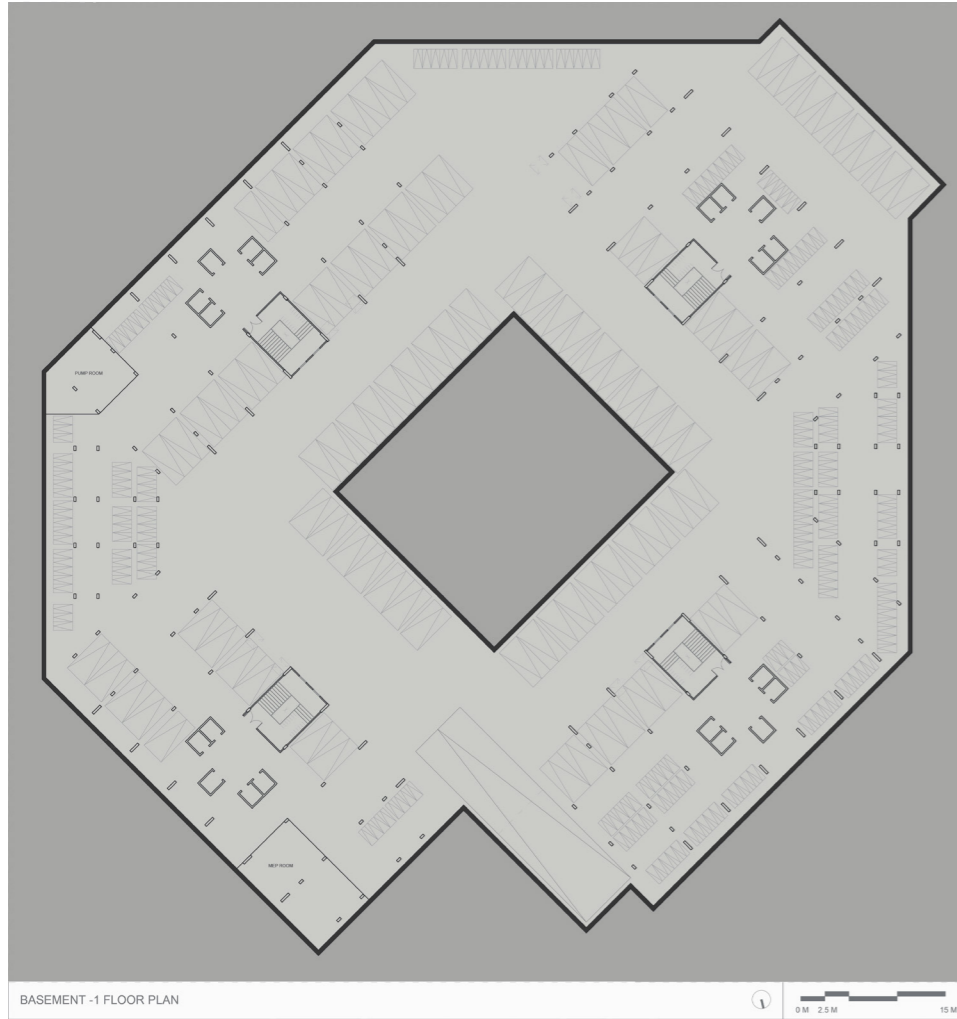
Darkness



Possible spatial implications of a core

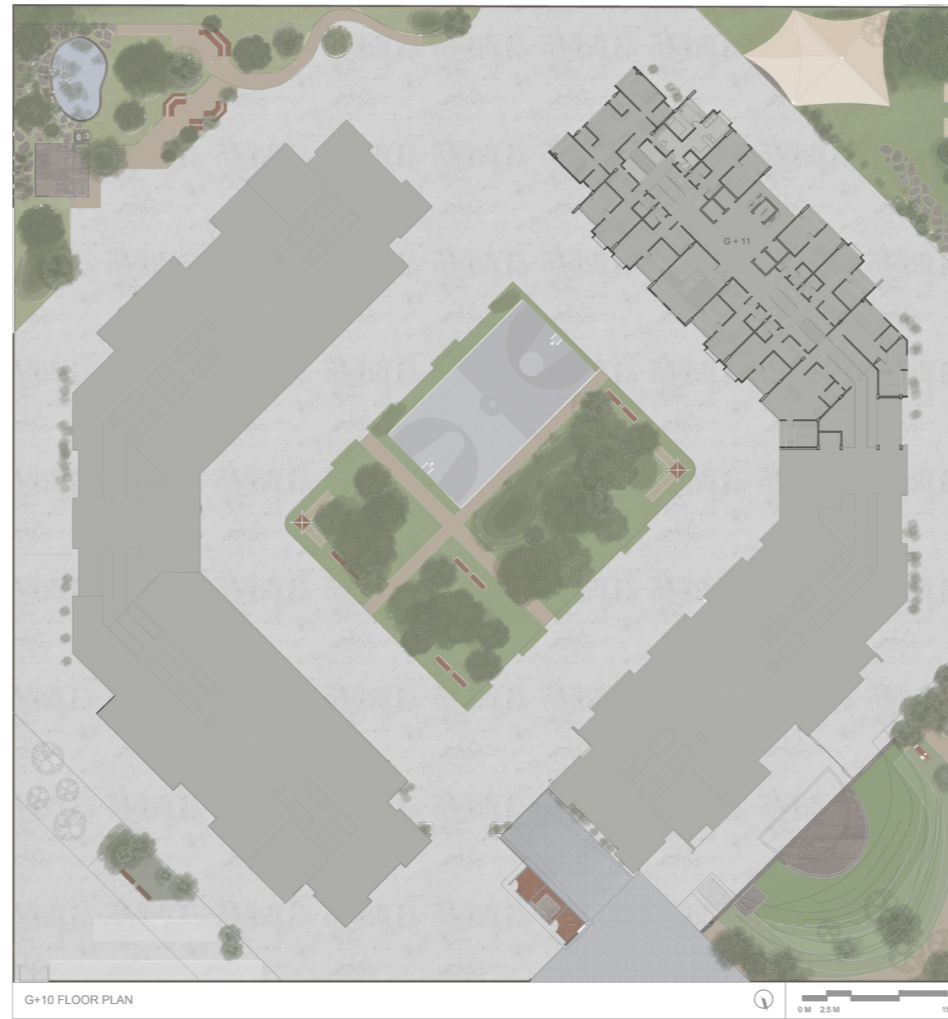


Articulating a core - Contrast - Lightness



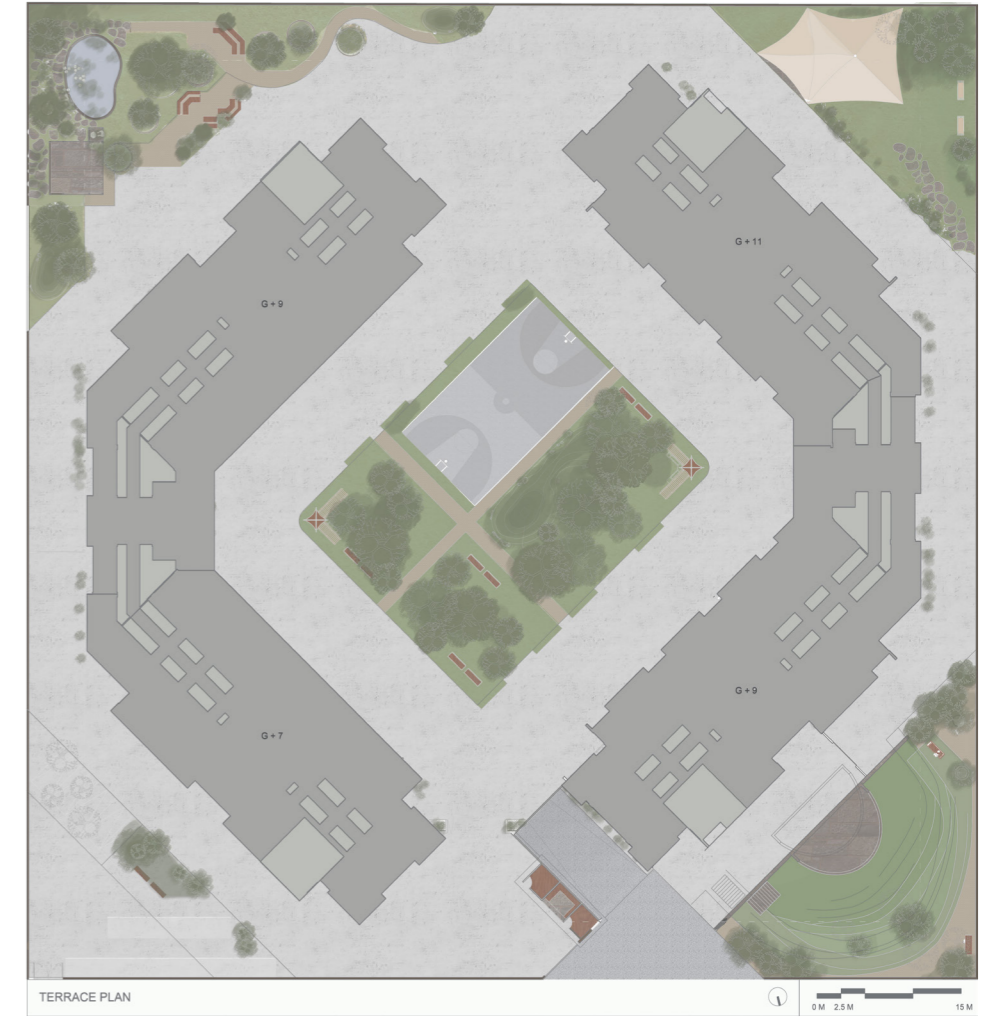
Basement lvl Plan

Car Parking: 105
Two Wheeler Parking: 260



G + 11 Floor Plan

Site Area: 10000 SQM
FSI Used: 2.7
Population Density: 806



Terrace lvl Plan

Building Height:
G + 7 to G + 11 (24 m to 37.5 m ht)

GROUND FLOOR PLAN

Microcosm

- Laundry
- Wash area
- Canteen
- Community Kitchen
- Gym
- Services :
 - Garbage collection
 - Cleaning
- Basket ball ground
- Café
- Multipurpose spaces for get together.
- Jogging track
- TV Room
- Club house for indoor games / yoga
- Common study/ workspace with wifi facility
- Parking



TYPICAL FLOOR PLAN

No. of Units
441 + 13(comm)

Unit types:

Student Rentals (single bed/ sharing)

1 bedroom apartments

2 bedroom sharing apartments

Transit stays

Guest rooms

Management accm.





Shared spaces bringing residents and the non-residents together to interact



Interweaving volumes allowing chance encounters, bonding over leisure activities



Sharing Meals and bonding over food at spaces like community kitchens, canteen and cafes or even at pantries in their residences.



Working around activities like doing laundry and bringing them to design consideration.

WOVEN STOREYS

A space designed in an attempt to allow the youth to hold ground, call it their own and weave stories at. Feel at home, together, under the umbrella housing the larger community at hand.



