



Site: Gota, Ahmedabad

Plot Area = 2641 sq.m

FSI min = 1.8
FSI max = 2.7 (chargeable)

FSI Area = 7245 * 2.7 = 7130.7 sq.m

Max. Building Ht = 45m

Road = 18m; 12m

Margins from rear and sides = (BH 45) 6m ; (BH 25) 4m

Margins from Road Side = 6 mt.

Margins between two buildings (BH 45) = 9m , (BH 25) = 6m ; (BH 16.5) = 4.5m

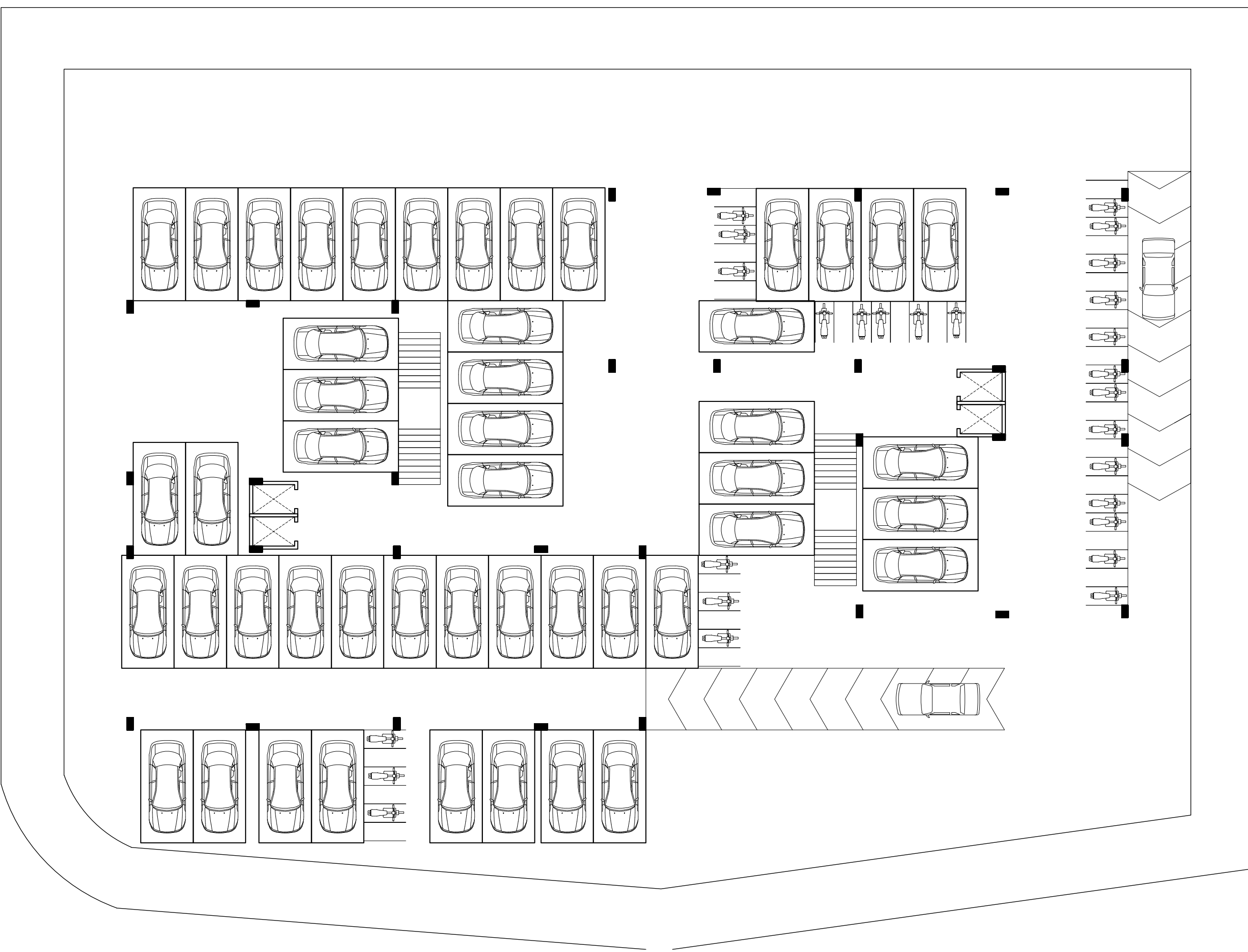
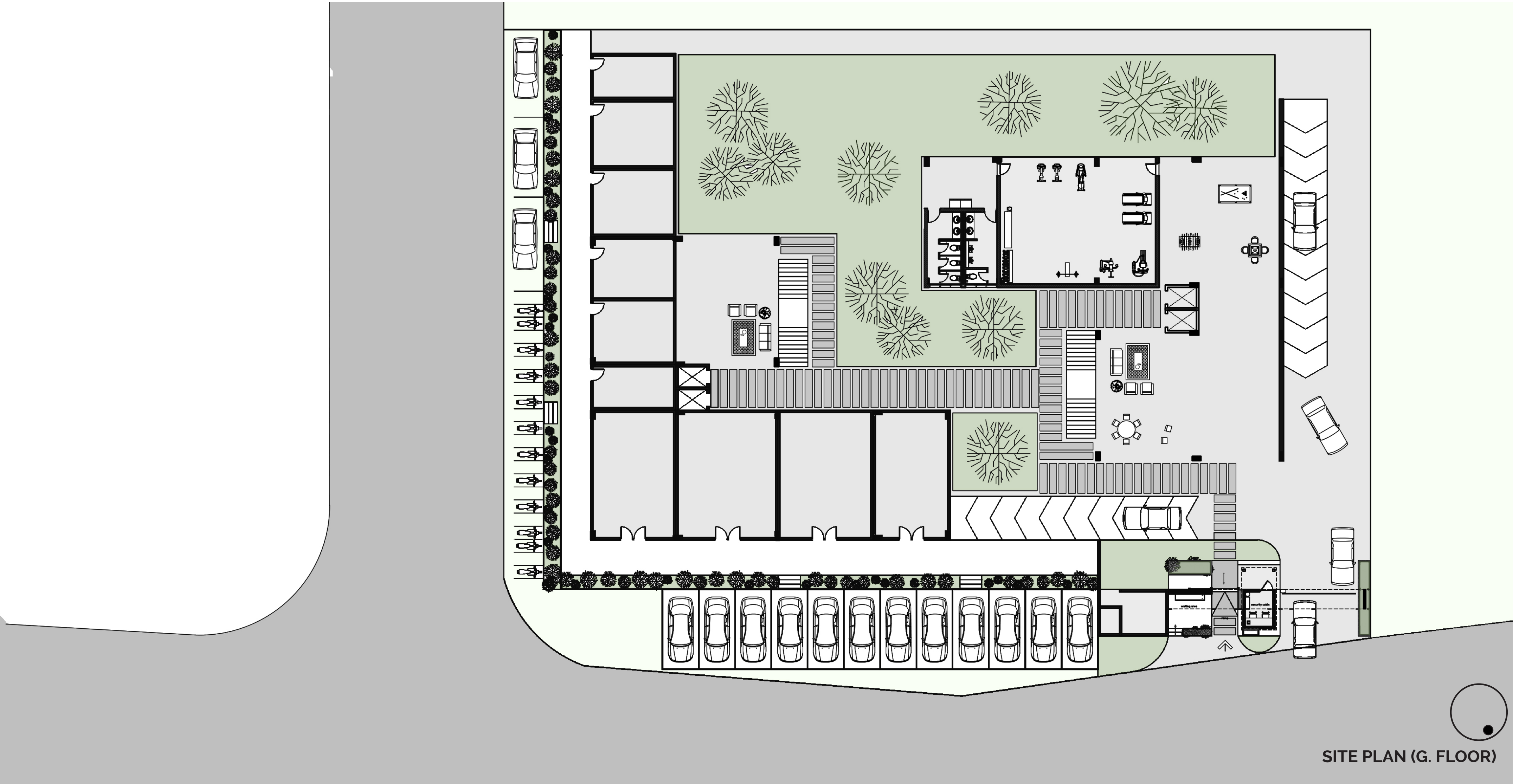
CALCULATIONS

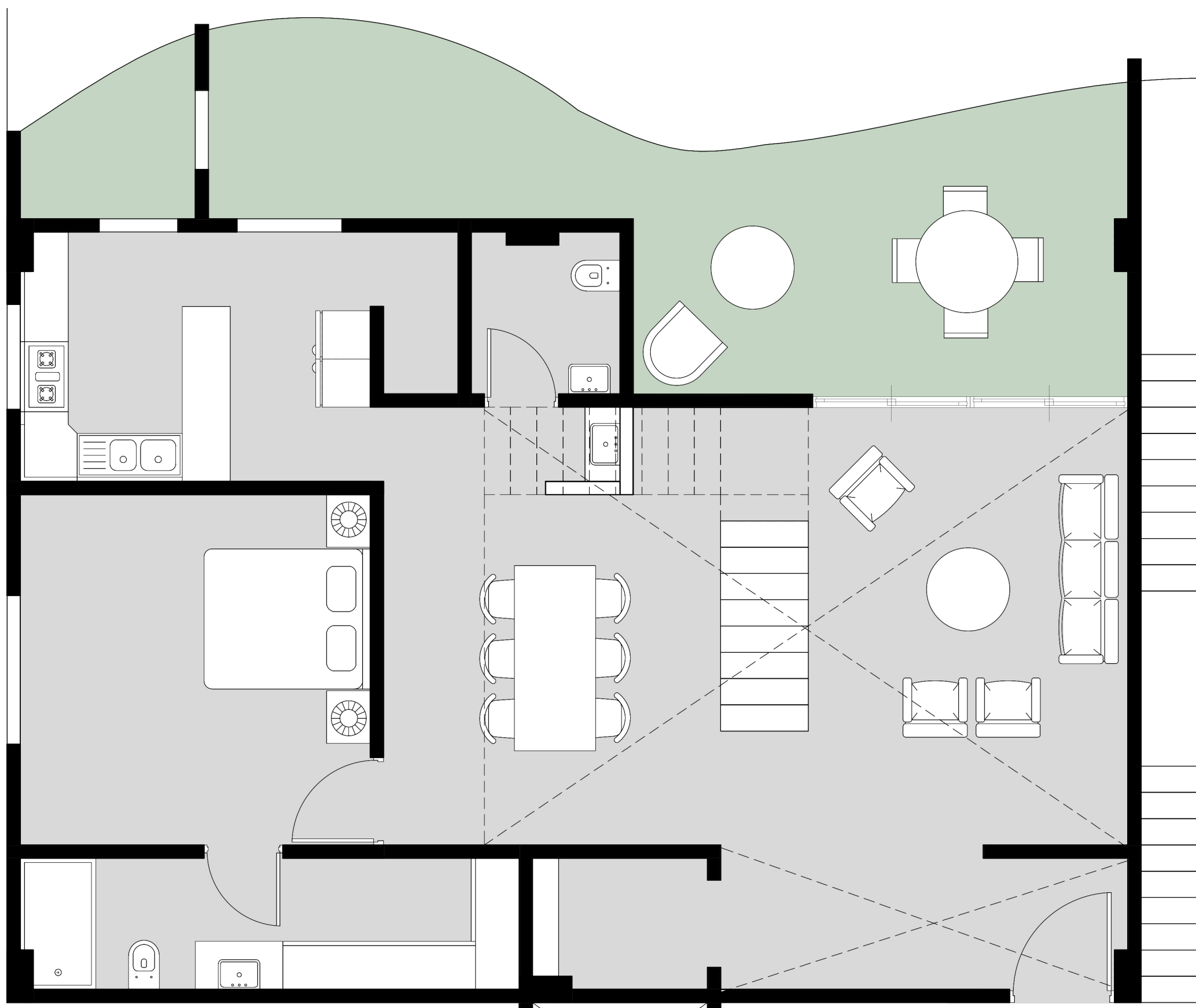
Unit Type 1 (3BHK Duplex)

Carpet Area = 170 sq.m
Rera Carpet Area = 181 sq.m
Built up = 185 sq.m
Super Built up = 192 sq.m

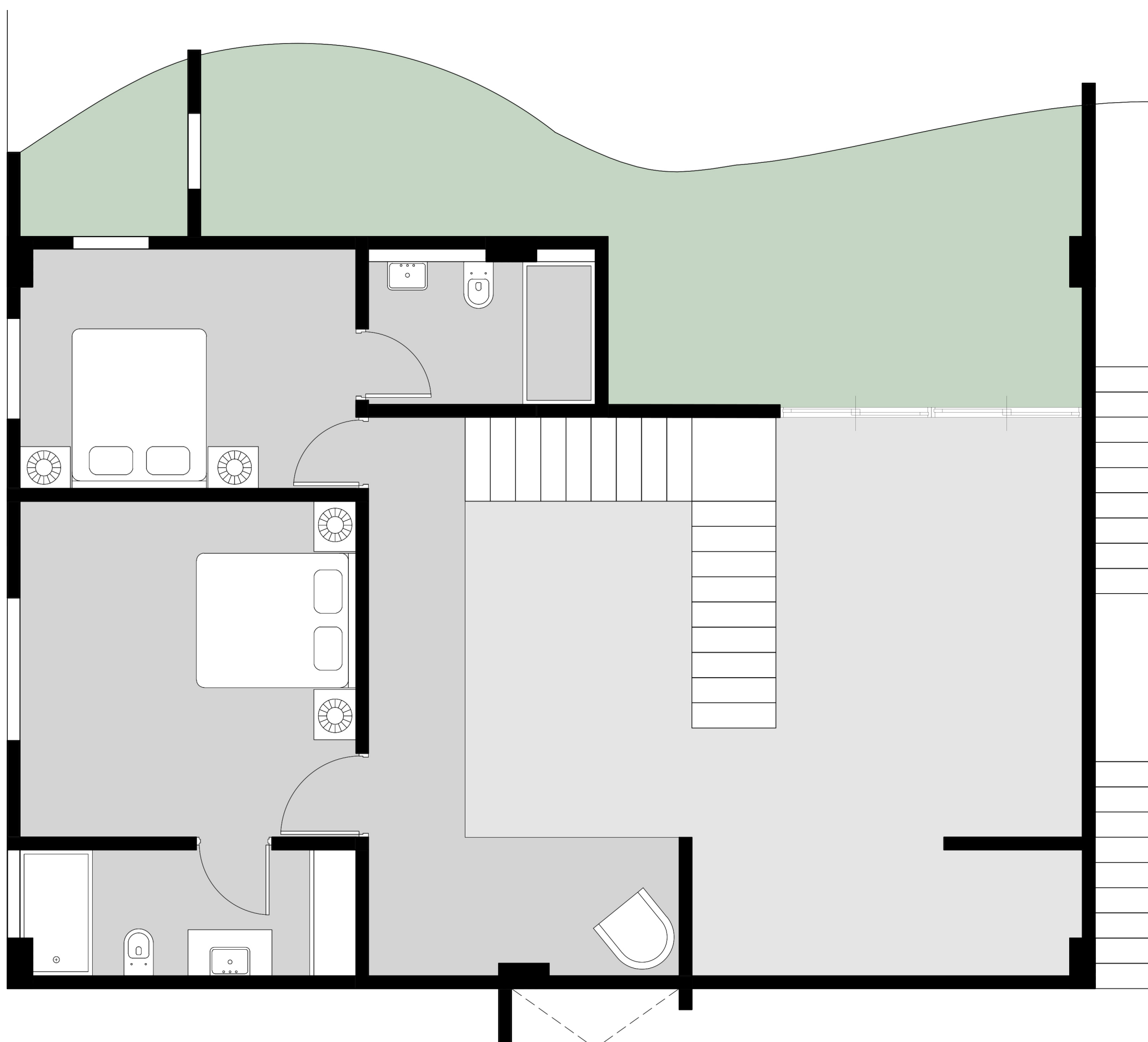
Unit Type 1 (1BHK)

Carpet Area = 108 sq.m
Rera Carpet Area = 115 sq.m
Built up = 120 sq.m
Super Built up = 127 sq.m

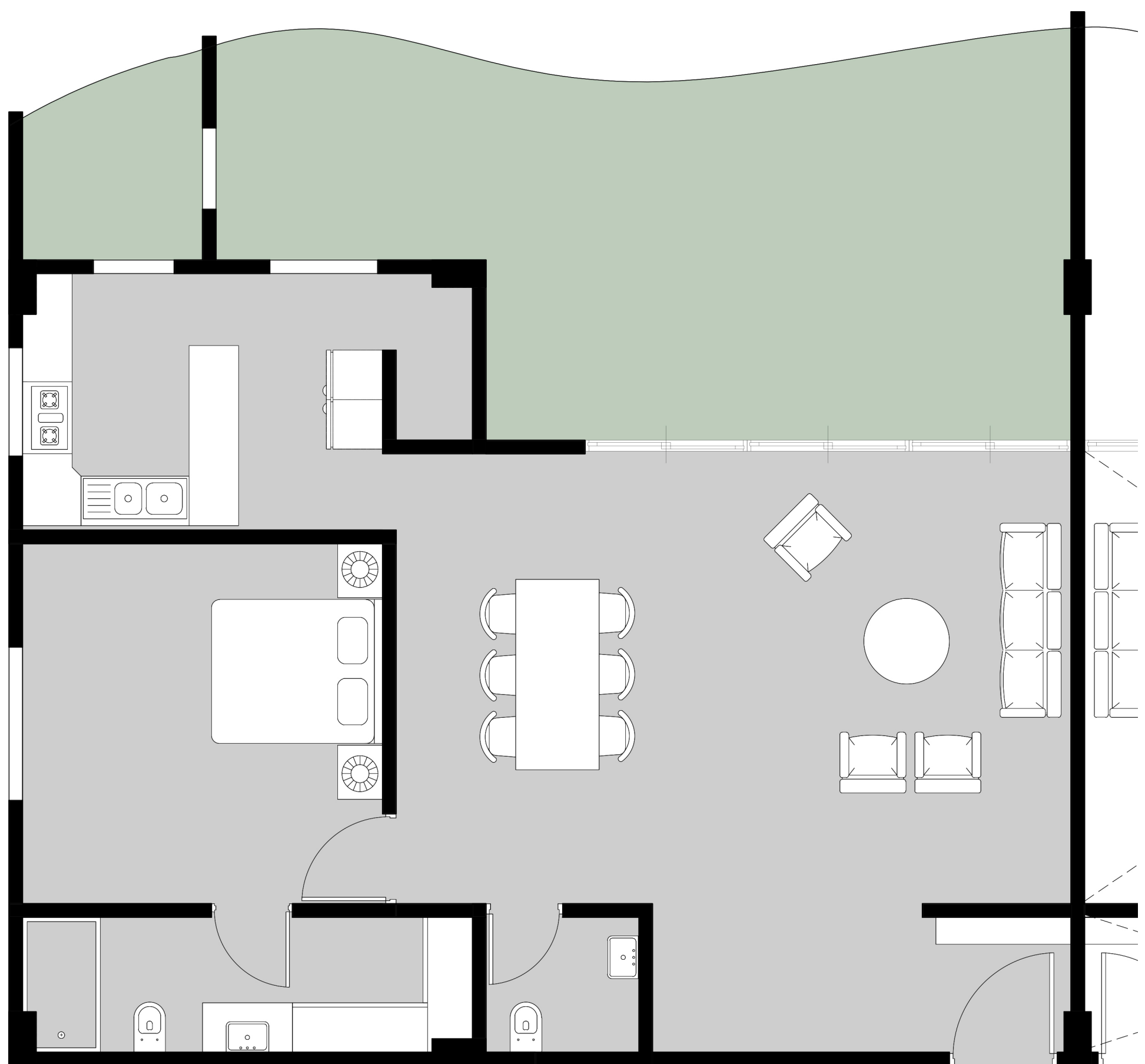




GROUND FLOOR OF 3BHK DUPLEX UNIT



FIRST FLOOR OF 3BHK DUPLEX UNIT



1BHK UNIT

