

UrbHouse

“Nitty Gritties”

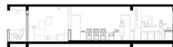
urban home

Type A



Section AA'

Type B



Section BB'

Type C



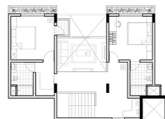
Section CC'



Plan with additional room



Narrow house



Duplex lower floor



Plan with bridge unit



Wide House

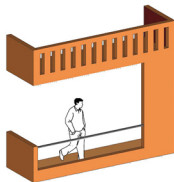
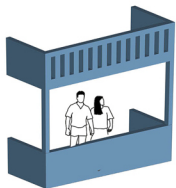
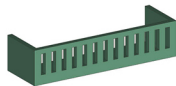
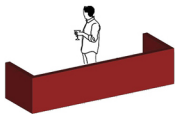


Duplex upper floor

want to bring
back memories
from your
previous home?

Choose your own home; The one closest to your heart

your home



Balcony style options

Colour options

customise and
personalise your
own home

Choose your own balcony and give it your favourite
colour identity

your plants

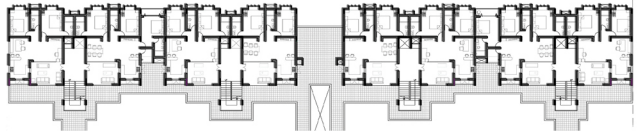
grown your own
plants and we
will water them
for you



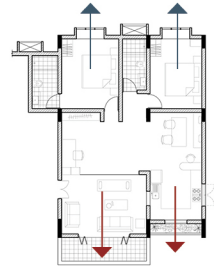
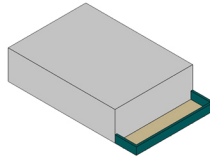
Planters in 0.6m projection

Grow your own plants, adding greenery to UrbVill and also giving a unique identity to your house

urban home



Street above the ground

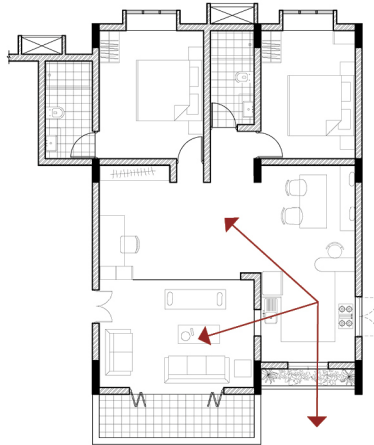


want to
experience streets
outside your
houses?

- Most used spaces i.e cooking area and living area throughout the day open up to the outside
- Private spaces like bedrooms stay isolated from the active areas

**mom/ dadi
keeps an
eye**

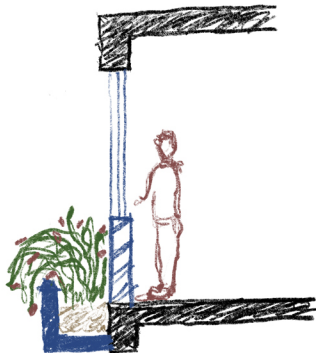
**who takes care
of the house
throughout the
day?**



Cooking space, which is generally used throughout the day remains well connected to all spaces of the home and even with the outside.

your own corner in UrbVill

ever felt like
disconnecting
from the world
for a few hours?

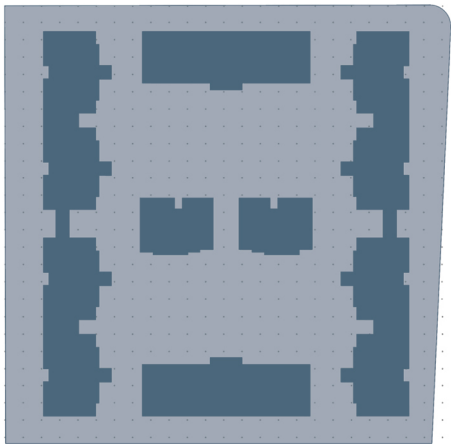


0.6m projection as planter



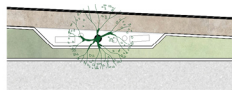
0.6m projection as bay window

Projection Options



Urbvill
“Nitty Gritties”

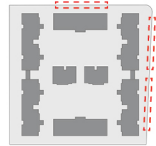
compound walls



on eastside road



Chikoo Tree for fruits



Key Plan

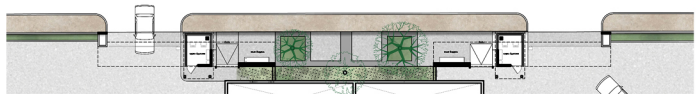


on eastside road



Neem Tree for shade

Tree species used

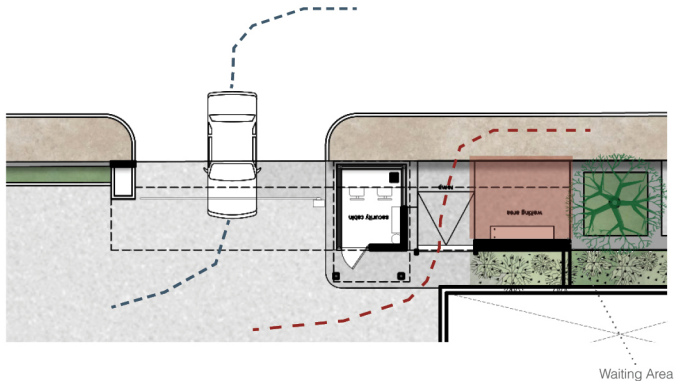


on main gate road

are compound walls only to define privacy?

Compound Wall offering back meeting/ resting spots to neighbourhood

security cabin



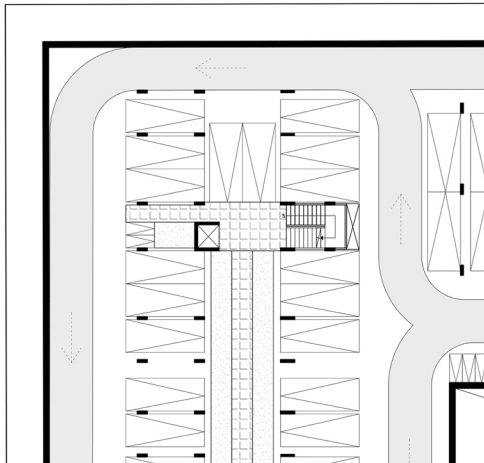
- Separate entry/ exit points for vehicles and pedestrians.
- Designated waiting area to wait for your friends to come to pick you up or for the swiggy delivery agent to wait for you to come pick up your food.

Well designed
security cabins to
with gates and
boom barrier
service

Thoughtful design of main gates/ security cabin areas

parking

how easy is
way finding in
parking? Have
you got confused
in parking?

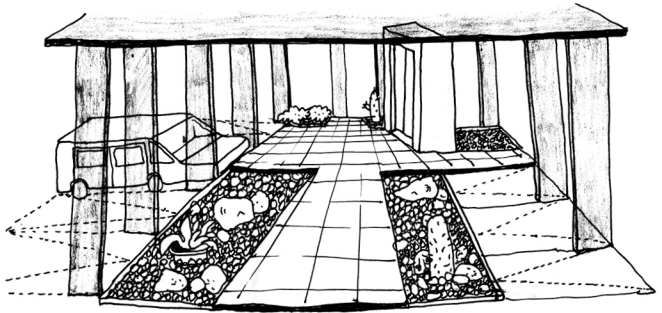


- Marked paint boxes for each home owner for their cars/ two wheelers parking.
- Complete road loop for ease of car movements which avoids traffic/ congestion and makes way finding easier.

Nitty gritty of basement parking

parking

are basement
parking areas
meant to be dark
and dingy spaces
devoid of any
experience?

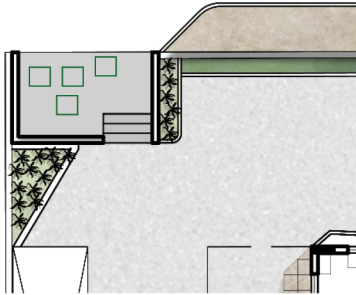


- Different flooring for vehicular areas/ pedestrian areas to avoid confusion after getting off your cars
- Planters (succulent plants) between separating the vehicular realm from pedestrian realm. Gives an experience and brings life.
- Open to sky cutouts for natural light and ventilation.

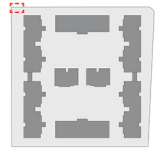
Bringing life to basement parking

garbage collection

designated area for garbage collection so that the garbage van can collect all the garbage from one spot



Garbage Collection Area



Key Plan



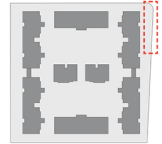
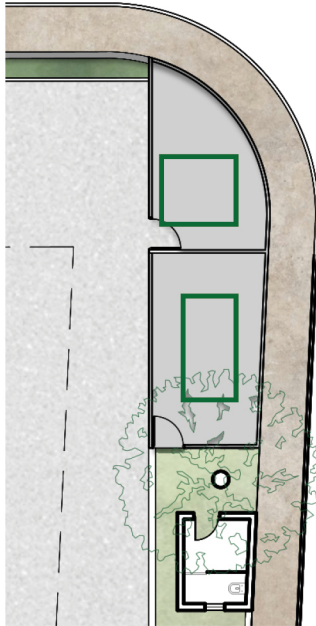
Raat-rani plantation

- Designated garbage collection area where the municipal garbage van can come and collect the waste without entering the precinct.
- Located on one corner of the site and Raat-rani planters around it avoiding spreading of foul smell.

Garbage collection facility

electrical area

designated area
in the site margin
for electrical
substation and
DG sets.



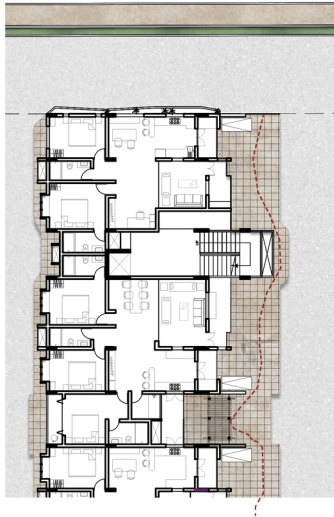
Key Plan

- Pre planned transformer and
DG set areas located in the
road side margins areas

Transformer and DG Set Area

pedestrian friendly

Always finding
it risky to walk
between moving
vehicles?

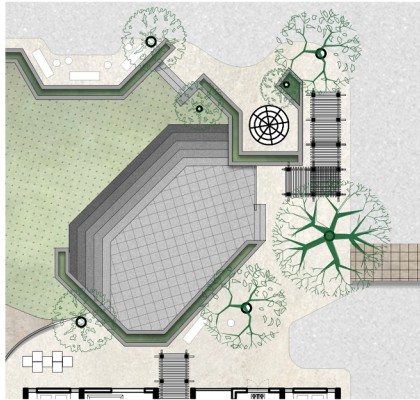


- Separate flooring for footpaths and roads to separate pedestrians and vehicular movement. This will let footpaths to transform into streets free of vehicles.

Ground Level acting as an active street

landscape

well designed
landscape
to promote
gatherings of
various scales



- Separate flooring designating different spaces
- Activating small corners under the trees for smaller gatherings and a designed amphitheatre for events and larger gatherings

Landscape promoting interactions