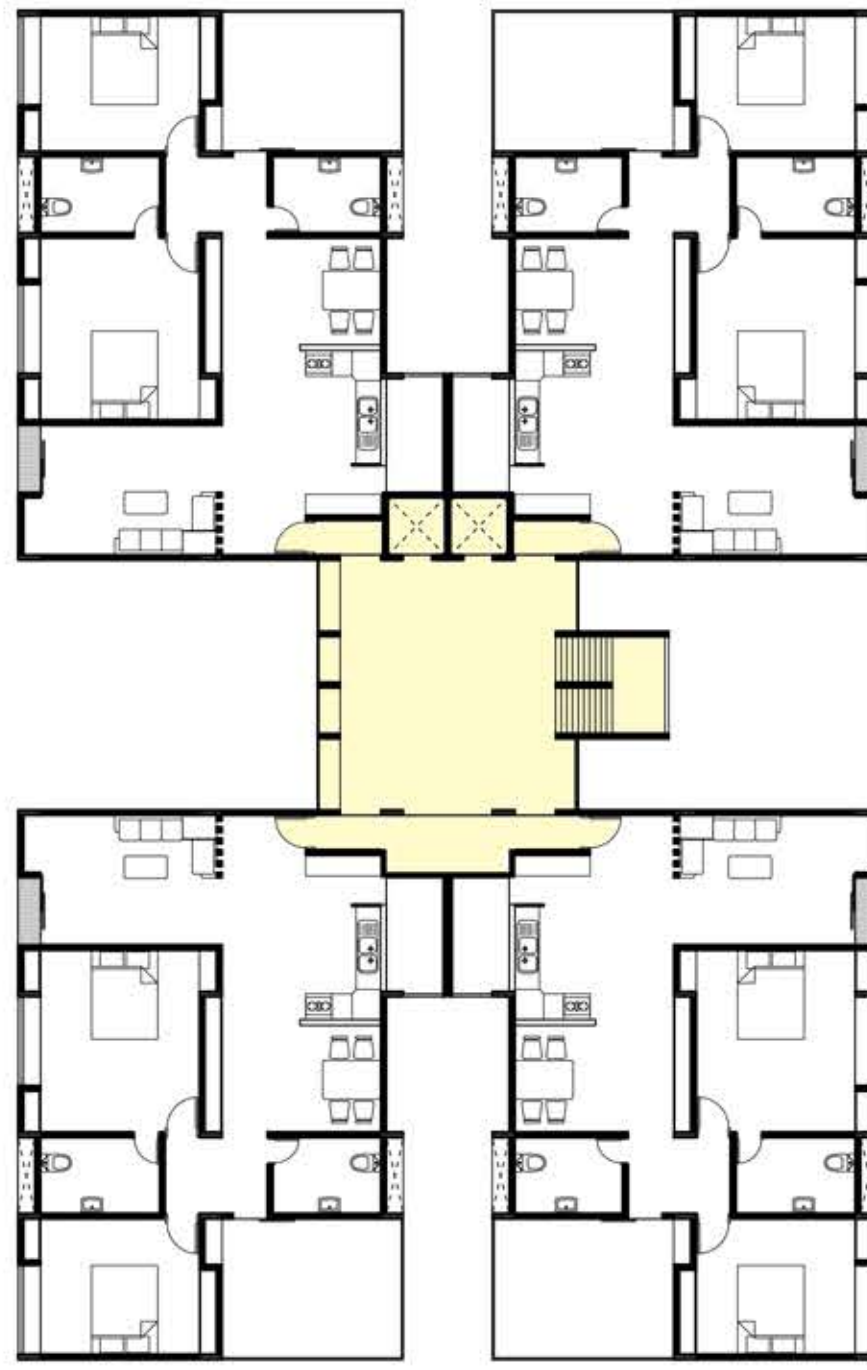
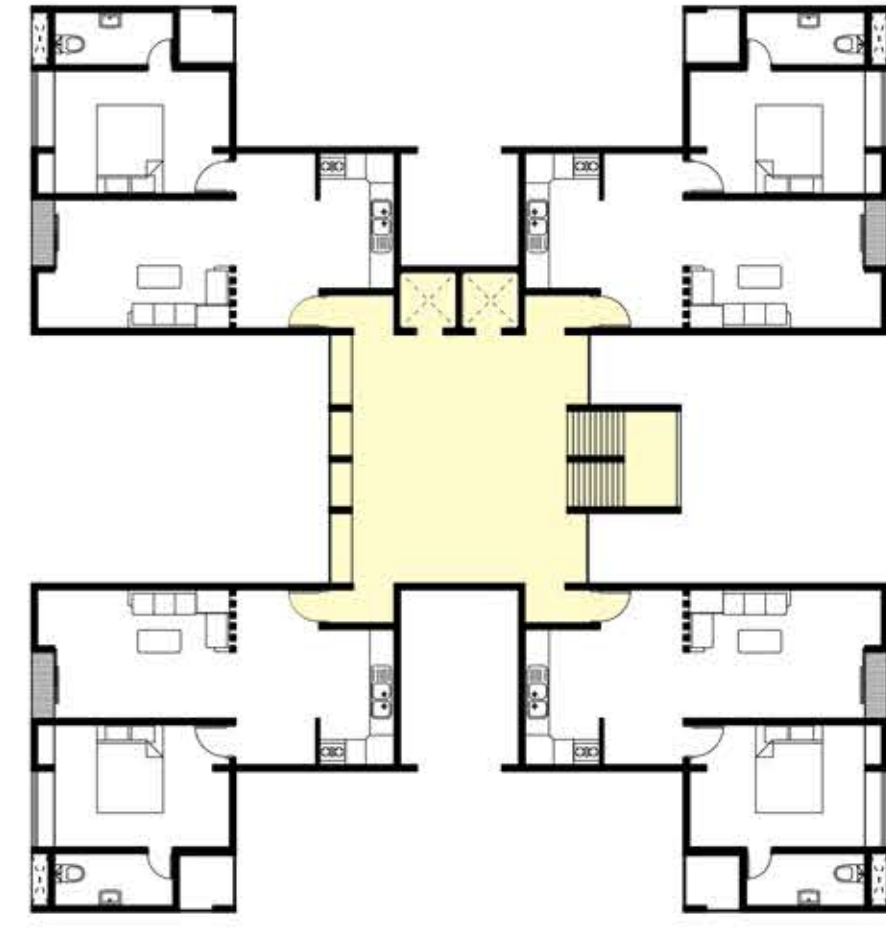


3 BHK UNIT FLOOR PLAN | TOTAL 32 UNITS

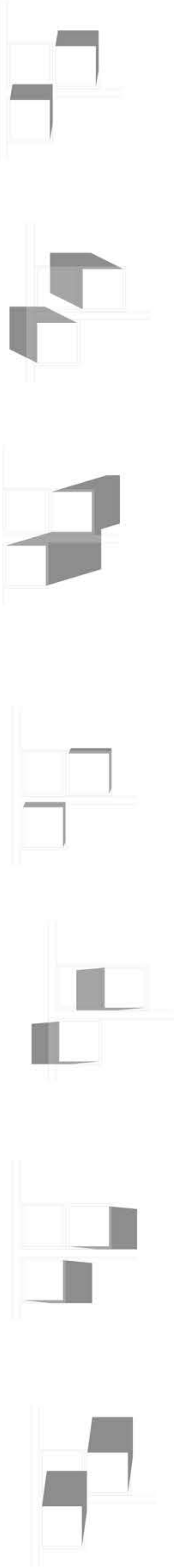


2 BHK UNIT FLOOR PLAN TOTAL 80 UNITS



1 BHK UNIT FLOOR PLAN | TOTAL 56 UNITS

ZONE - RESEDENTIAL 1
 FSI - 1.8
 TOTAL PLOT AREA- 10,000 M2
 TOTAL BUILT UP- 18,000 M2
 TOTAL HEIGHT : 45 M (G+14)
 TOTAL 3 BHK- 32
 TOTAL 2BHK - 80
 TOTAL 1BHK- 56
 TOTAL UNITS - 168
 AREA 3BHK - 150 M2
 AREA 2BHK- 120 M2
 AREA 1 BHK - 66 M2



SHADOW ANALYSIS OF SITE



SITE PLAN | SCALE 1:250

