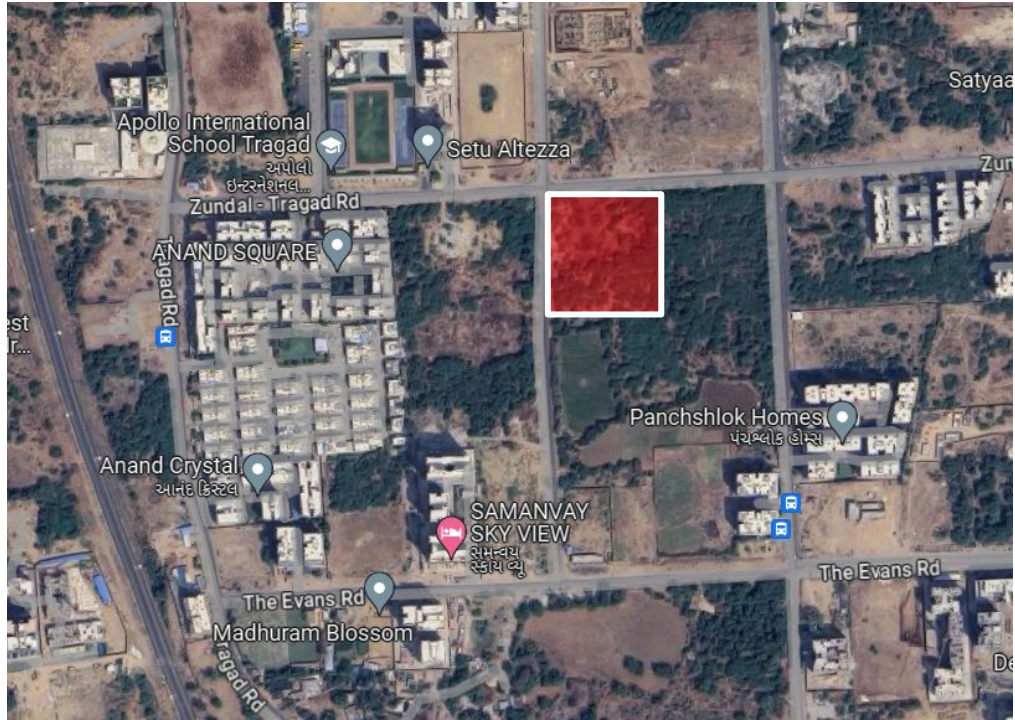
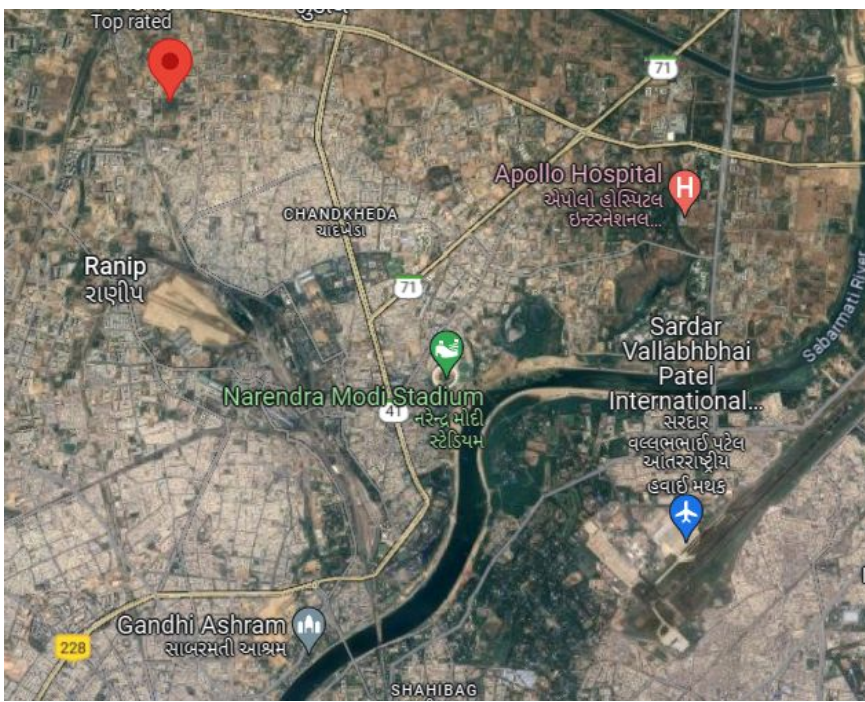
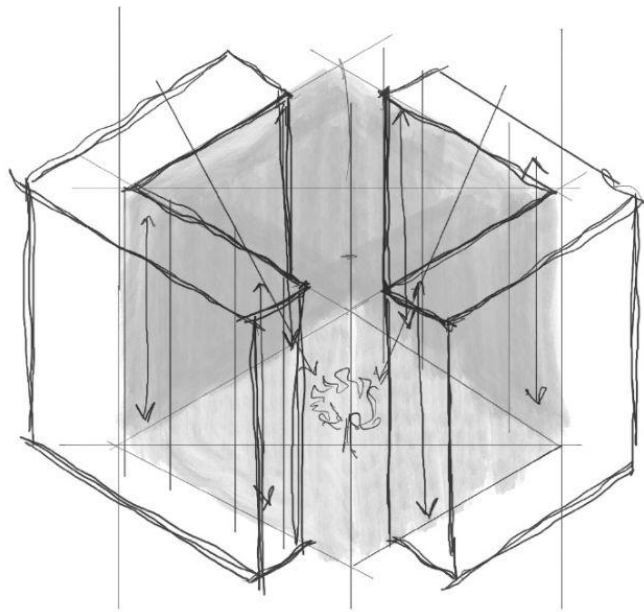


# ~~Project~~ Anubhav 331

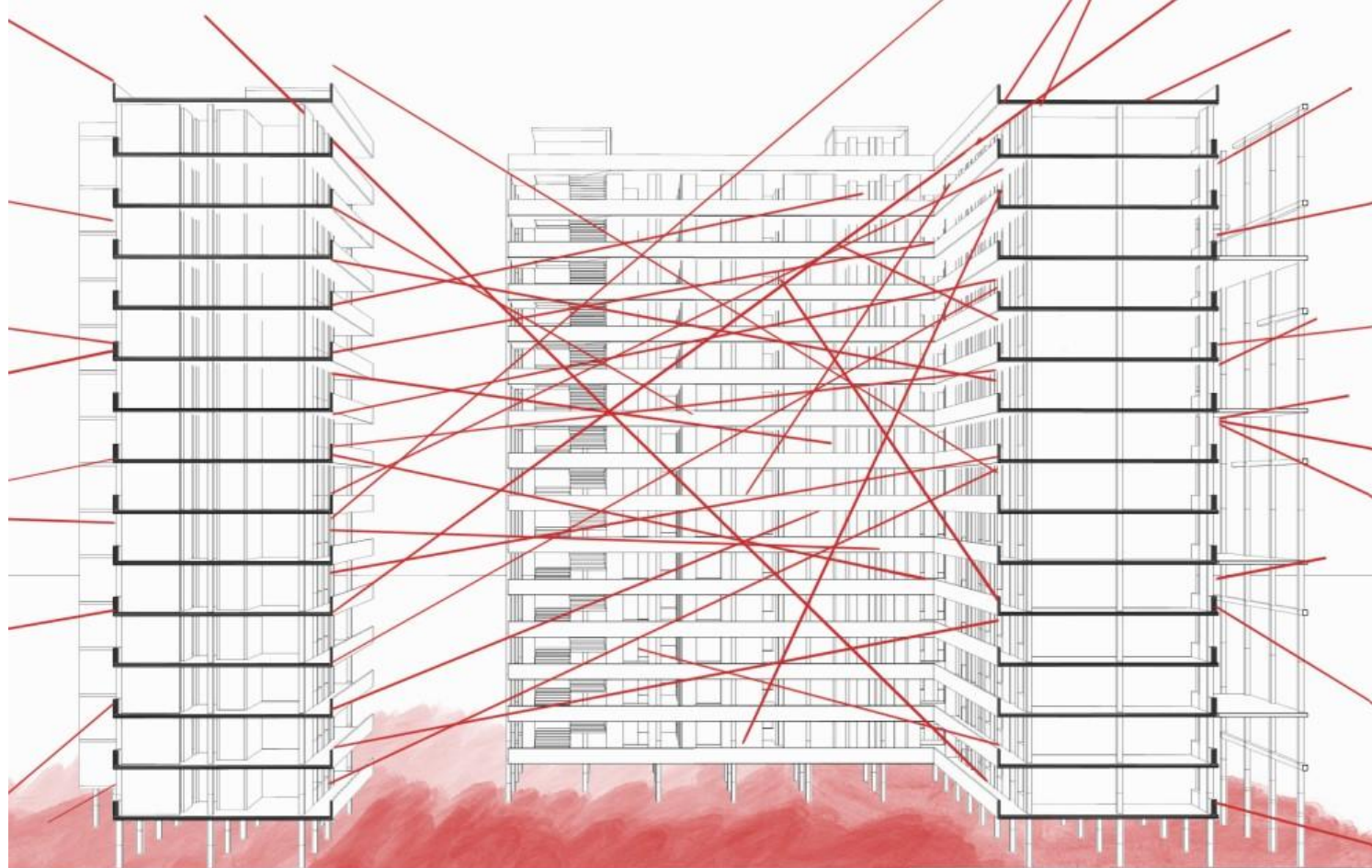
Creating spaces that trigger memories

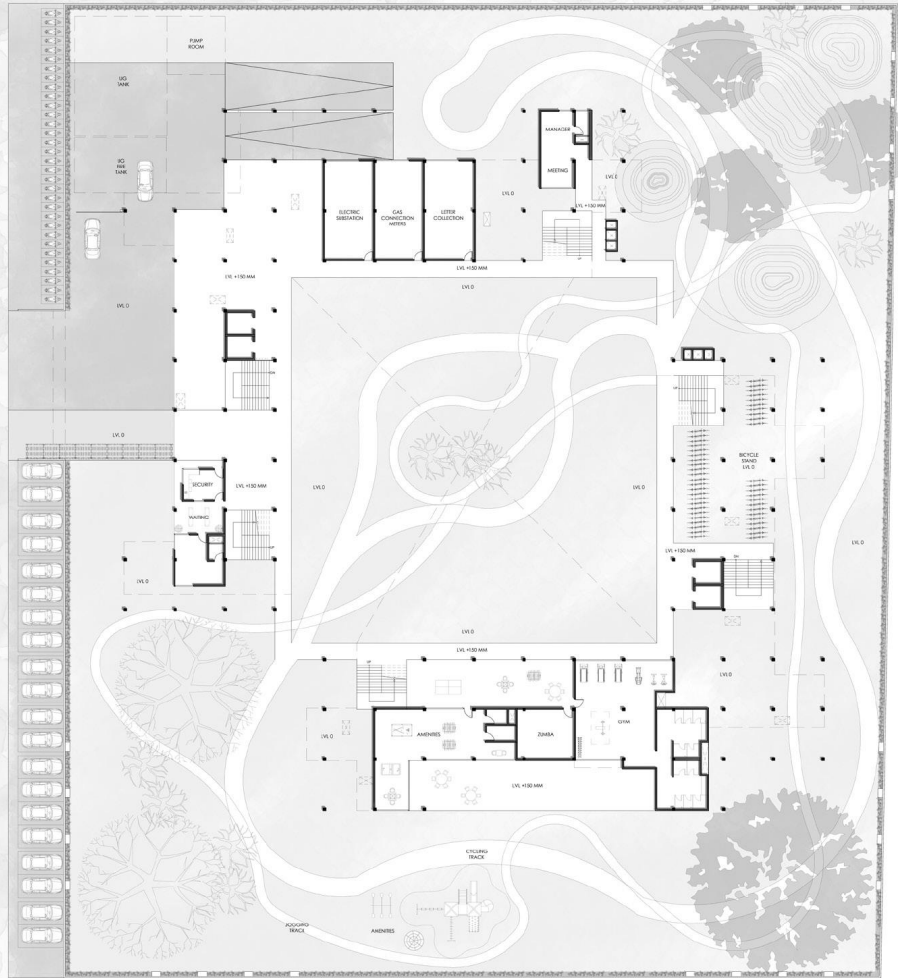
Sanjana Chaturvedi



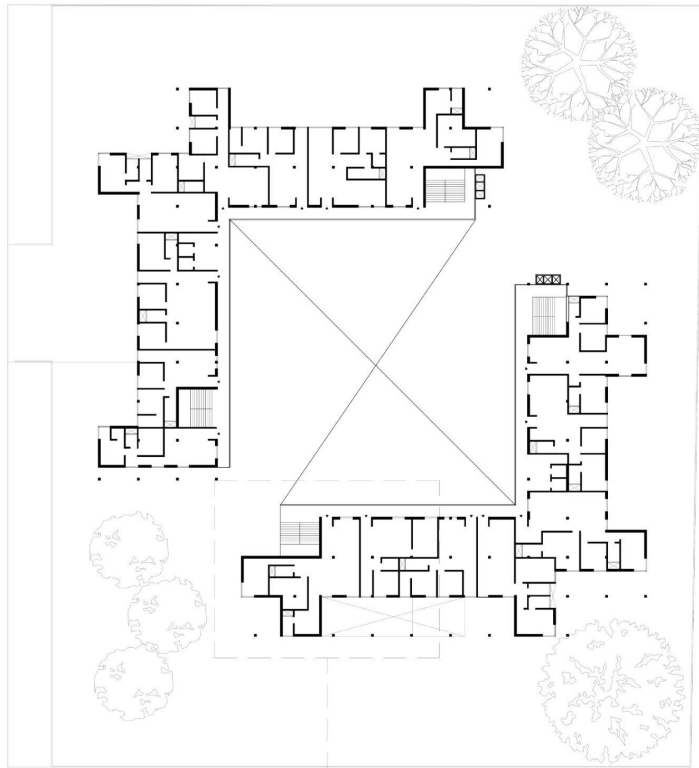


Creating spaces that are starting or sparking points of different experiences





Ground Floor Plan



Cluster Plan



## NUMBERS

Plot Area: **10065.3 sq. mt.**  
 FSI Available: **27,176 sq. mt.**  
 FSI Used: **27,200 sq. mt.**  
 Built up Area: **31,500 sq. mt.**  
 FSI Available: FSI Used **1:1**  
 Super Built up Area: **35,000 sq. mt.**

### UNITS

No. of Floors: **G+14**  
 No. of units per floor: **15**  
 Total Number of units: **210**  
 Type of units: **11**

### Type A

RERA Carpet Area: **86 sq. mt.**  
 Builtup Area: **88 sq. mt.**  
 Cost of 1 Unit: **Rs. 50,00,000**

### Type B

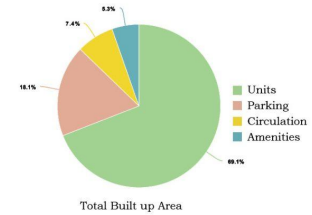
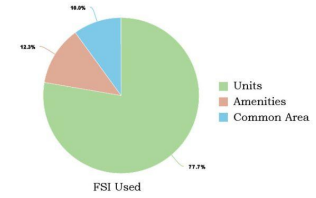
RERA Carpet Area: **113 sq. mt.**  
 Builtup Area: **115 sq. mt.**  
 Cost of 1 Unit: **Rs. 66,88,000**

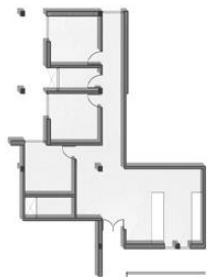
### Type C

RERA Carpet Area: **143 sq. mt.**  
 Builtup Area: **145 sq. mt.**  
 Cost of 1 Unit: **Rs. 84,50,000**

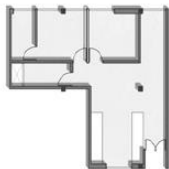
### PARKING

No. of Basements : **1**  
 Total no. of Cars : **212**  
 Cars: Units **1:1**





Unit B1  
118 sq m | 14 nos



Unit A1  
86 sq m | 42 nos



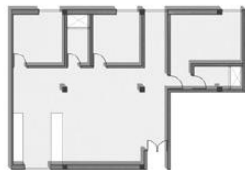
Unit B2  
118 sq m | 14 nos



Unit C1  
143 sq m | 24 nos



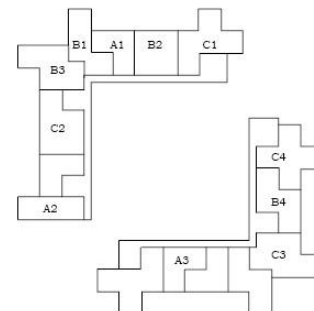
Unit A2  
86 sq m | 14 nos



Unit C2  
148 sq m | 14 nos



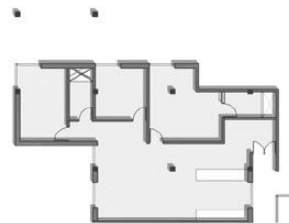
Unit B3  
118 sq m | 20 nos



UNIT A= 86 sq m (3 Variations) = 74 nos  
UNIT B= 113 sq m (4 Variations)= 70 nos  
UNIT C= 143 sq m (4 Variations)= 66 nos



Unit A3  
86 sq m | 14 nos



Unit C3  
143 sq m | 14 nos



Unit B4  
113 sq m | 14 nos



Unit C4  
148 sq m | 14 nos



The corridor that looks into the cubical courtyard holds the most lively and active space of the home: the kitchen and spill over



The mass which is separated by the void of the courtyard, slightly detaches to let the void flow out



The kitchen window that opens into the corridor increases community interaction and a sense of relativity amongst the neighbours



The ground floor is built by masses between the sea of columns. It does not follow the footprint of the mass above and lets the ground flow in and out





Physical model showing different shades of windows. Symbolically the same window but no two windows