

# GROUND FLOOR PLAN



## 24m Wide Road

6.00 M SETBACK LINE

6.00 M SETBACK LINE

7.50 M SETBACK LINE

6.00 M SETBACK LINE

CENTRAL OPEN SPACE

CENTRAL OPEN SPACE

UGT, RAINWATER HARVESTING

24 NOS PARKING

24 NOS PARKING

12 NOS PARKING

VISITOR PARKING - 9NOS.

5.00 M WIDE VEHICULAR ROAD

5.00 M WIDE VEHICULAR ROAD

5.00 M WIDE VEHICULAR ROAD

4.50 M WIDE VEHICULAR ROAD

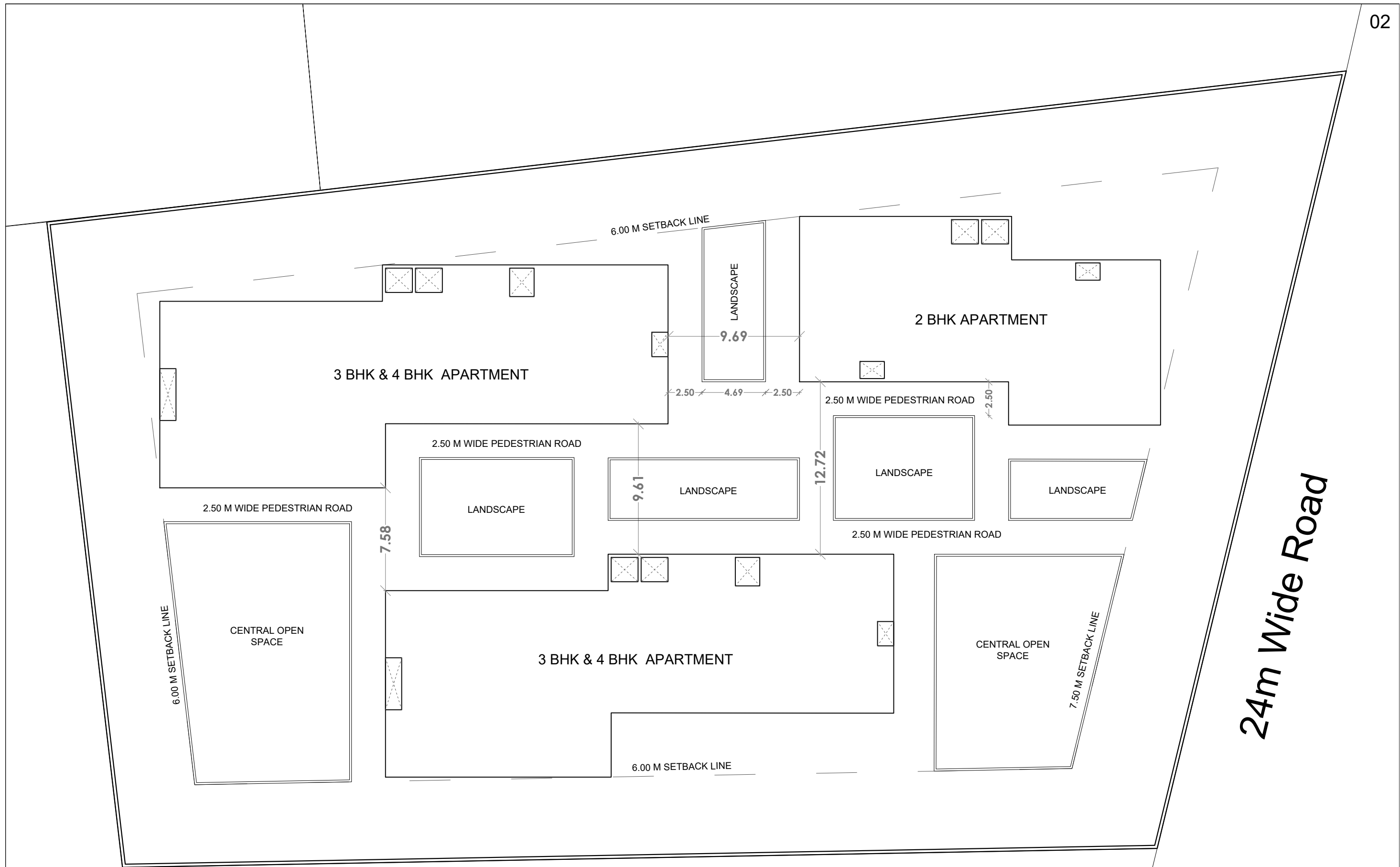
9.61

9.69

12.72

6.21 ENTRY

9.80 EXIT

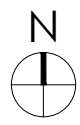


**FIRST FLOOR PLAN**





**TYPICAL 2BHK FLOOR PLAN**



TOTAL PLOT AREA : 4,490 SQ.M

TYPICAL FLOOR PLAN - 2 BHK UNITS  
 2 UNITS ON EACH FLOOR (TOTAL 5 FLOORS) = TOTAL 10 UNITS

BUA AREA PER UNIT (INCLUDING BALCONIES) - 135.00 SQ.M. (1450.00 SQ.FT.)

BUA AREA PER FLOOR - 315.00 SQ.M. (3,390.00 SQ.FT.)

TOTAL BUA AREA INCLUDING 5 FLOORS - 1,575 SQ.M. (16,950.00 SQ.FT.)



TYPICAL 4BHK UNIT PLAN

TYPICAL 3BHK UNIT PLAN

TYPICAL 3BHK & 4BHK FLOOR PLAN



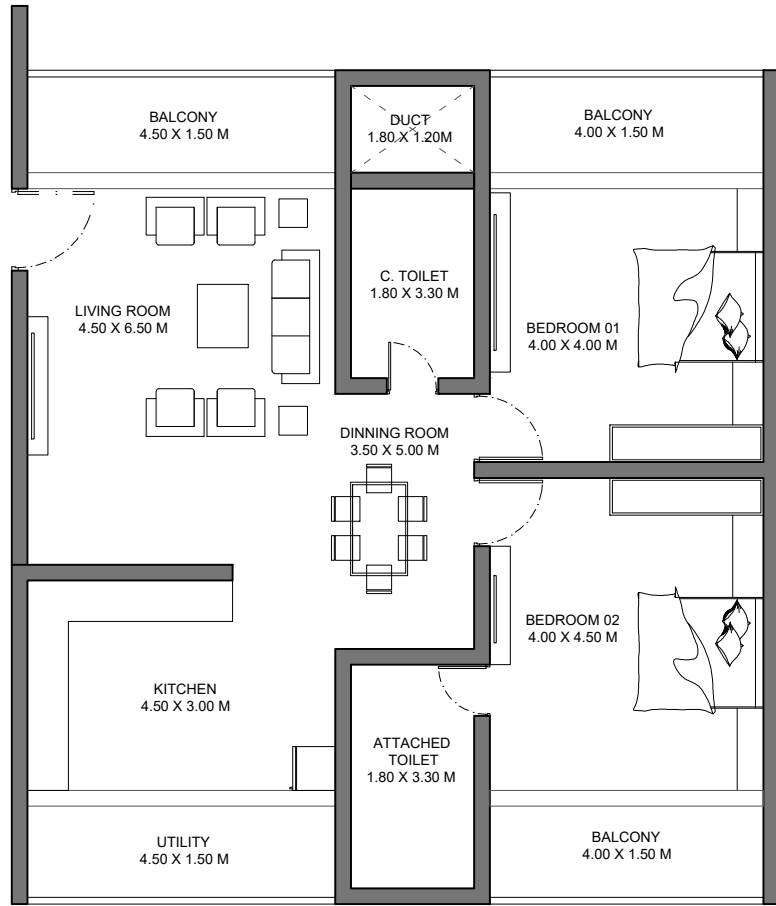
TOTAL PLOT AREA : 4,490 SQ.M

1 - 4 BHK UNITS ON EACH FLOOR (TOTAL 13 FLOORS) = TOTAL 12 UNITS  
 1 - 3 BHK UNITS ON EACH FLOOR (TOTAL 13 FLOORS) = TOTAL 12 UNITS

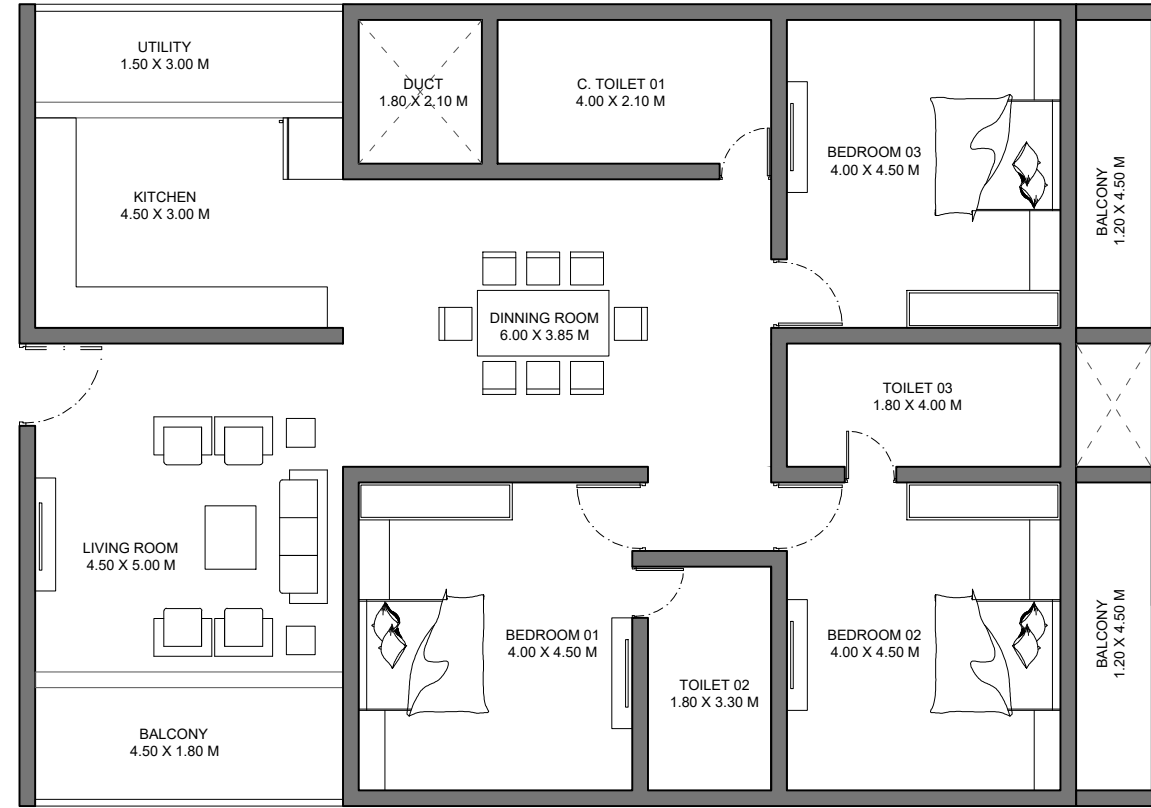
4 BHK - BUA AREA PER UNIT (INCLUDING BALCONIES) - 225.00 SQ.M. (2,420.00 SQ.FT.)

3 BHK - BUA AREA PER UNIT (INCLUDING BALCONIES) - 190.00 SQ.M. (2,045.00 SQ.FT.)

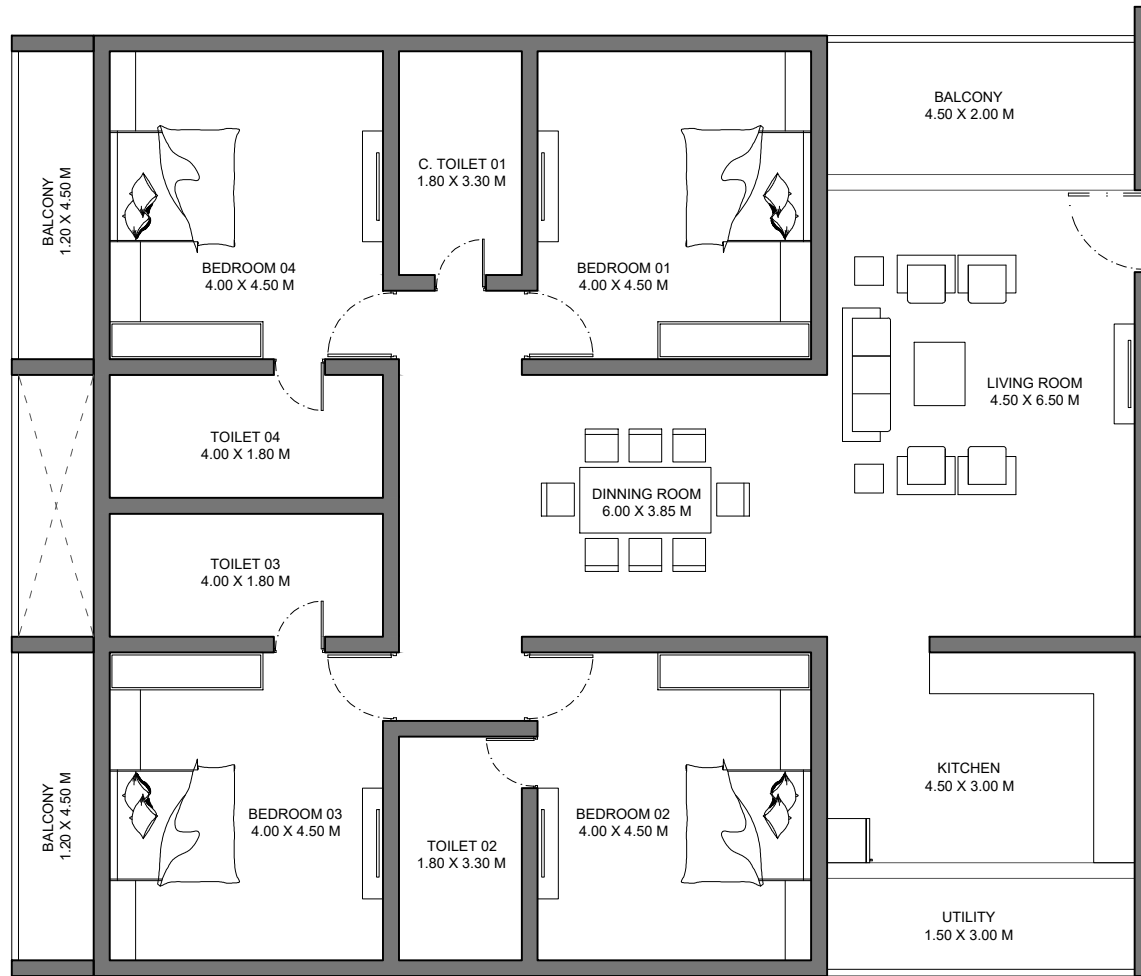
BUA AREA PER FLOOR - 455.00 SQ.M. (4,900.00 SQ.FT.)  
 TOTAL BUA AREA INCLUDING 12 FLOORS - 5,460.00 SQ.M. (58,770.00 SQ.FT.)  
 TOTAL BUA AREA INCLUDING 2 WINGS - 10,920.00 SQ.M. (1,17,540.00 SQ.FT.)



TYPICAL 2BHK UNIT PLAN - 135.00 SQ.M. (1450.00 SQ.FT.)



TYPICAL 3BHK UNIT PLAN - 190.00 SQ.M. (2,045.00 SQ.FT.)



TYPICAL 4BHK UNIT PLAN - 225.00 SQ.M. (2,420.00 SQ.FT.)