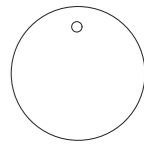




Total Plot Area - 4,490 sqm
 Total No. of units in each block - 4
 Total Height of each block - 33.6m - G + 6 [Each Floor 2.4 + 2.4 - 4.8m]
 Total NO. of Blocks - 2 No.s
 Total NO. of Units in each block - 24 No.s
 Total NO. of Units - 48 No.s
 TOTAL BUILT UP AREA - 10,752 SQM
 Each Unit BUILT AREA - 224 SQM - 2410 Sq.ft

Road Level Plan

1 : 300



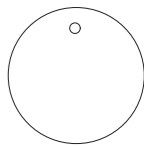


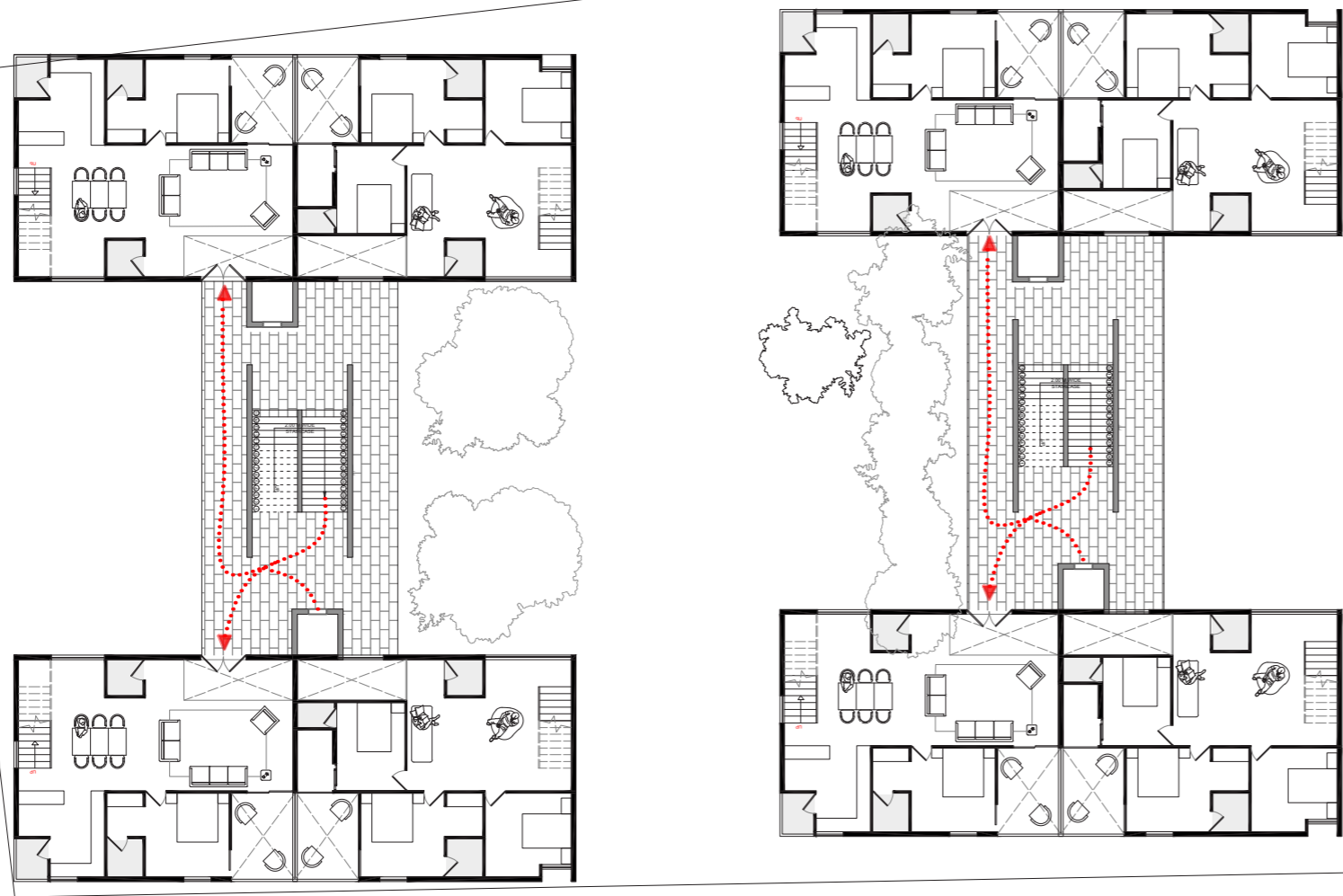
PEDESTRIAN PATHWAY

Waste collection bay

Mezzanine level 1
plan [+2.4m]

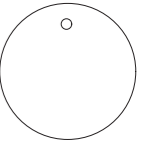
1 : 300



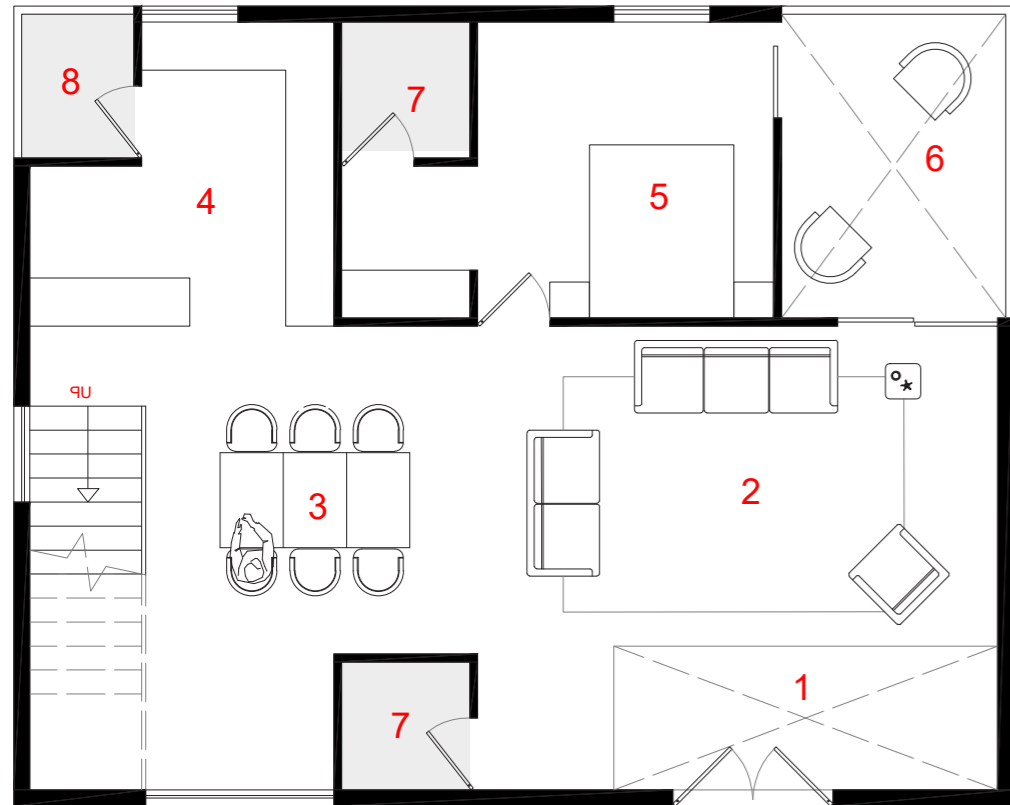


Mezzanine level 2
plan [+4.8m]

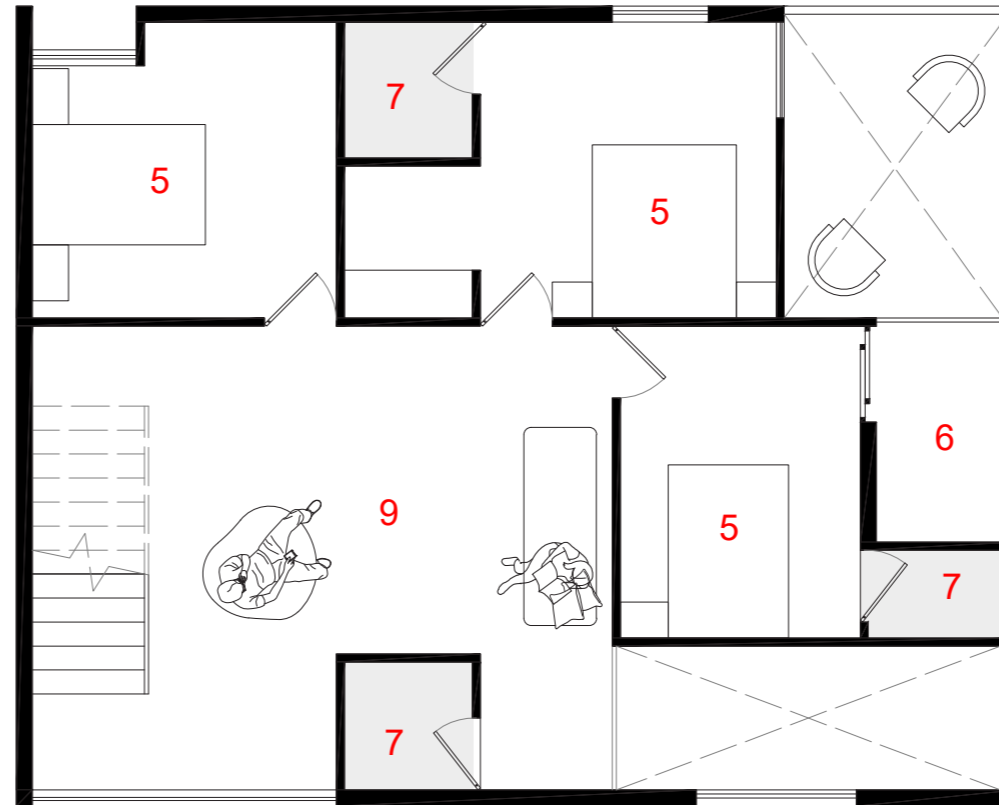
1 : 300



UNIT PLAN LEVEL 1

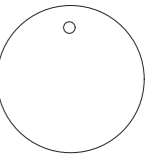


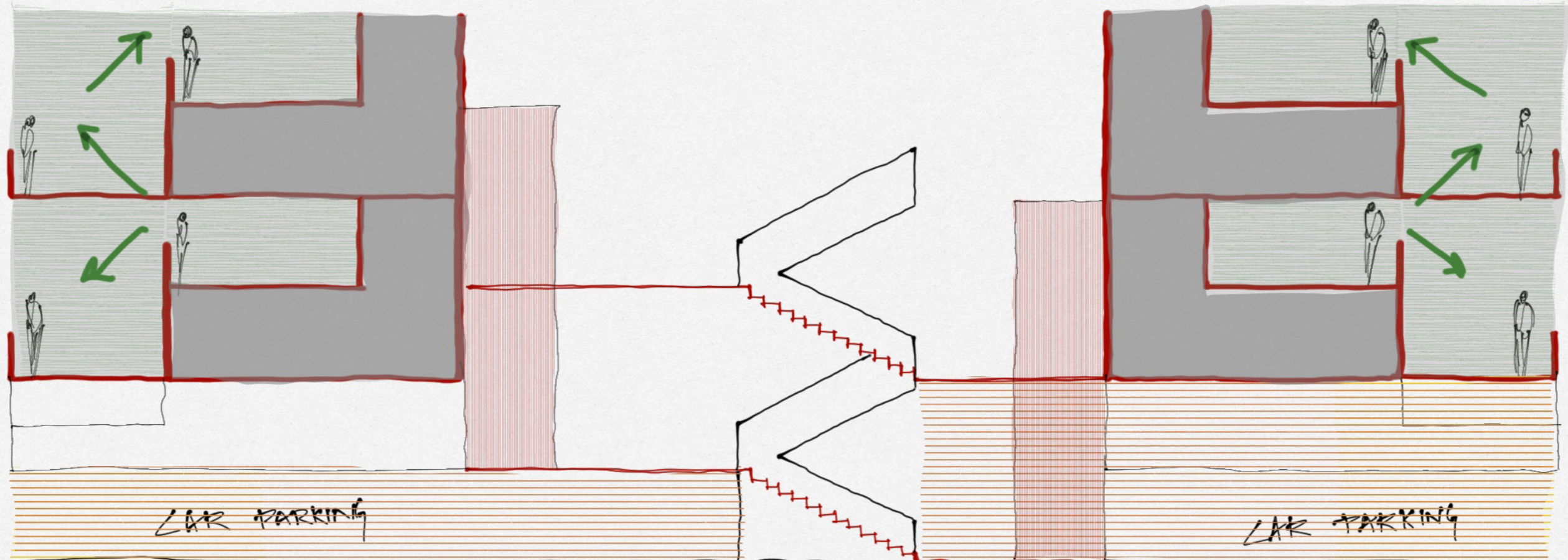
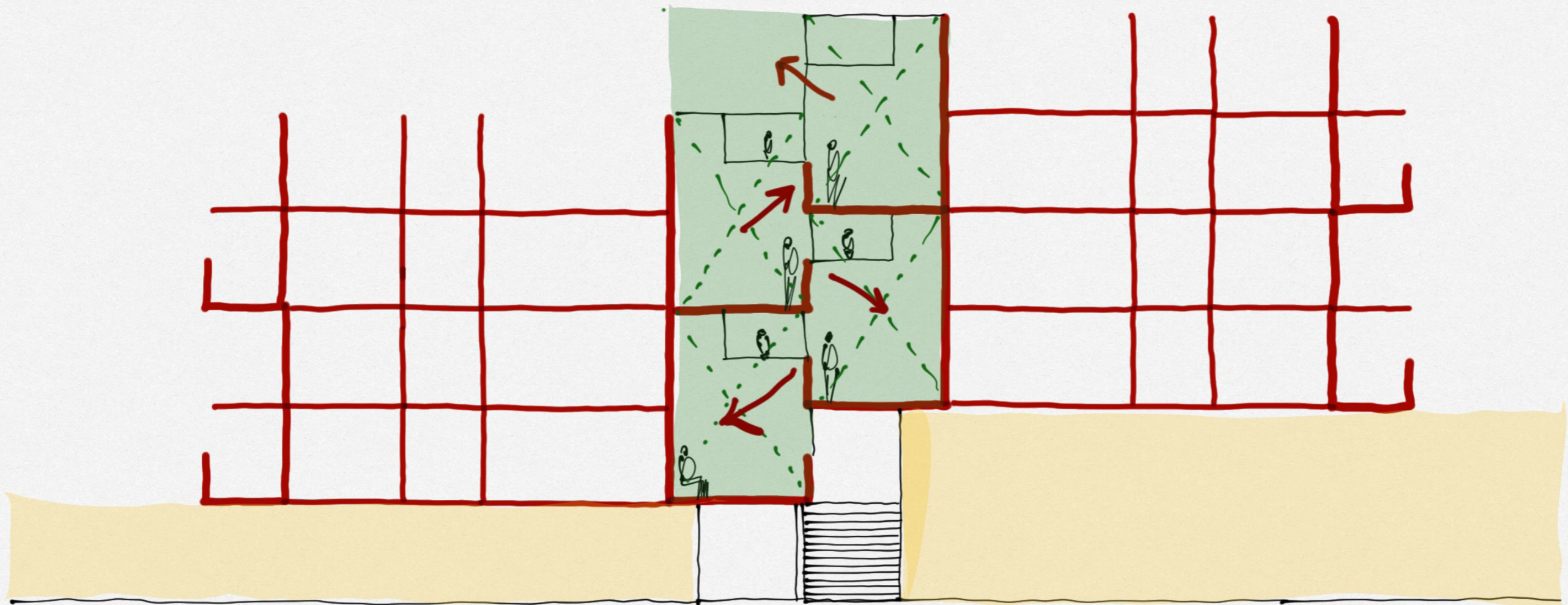
UNIT PLAN LEVEL 2



LEGEND

- 1. ENTRANCE DOUBLE HT FOYER
- 2. LIVING
- 3. DINING
- 4. KITCHEN
- 5. BEDROOM
- 6. BALCONY
- 7. TOILET
- 8. UTILITY
- 9. Family lounge





SECTIO BB'

