

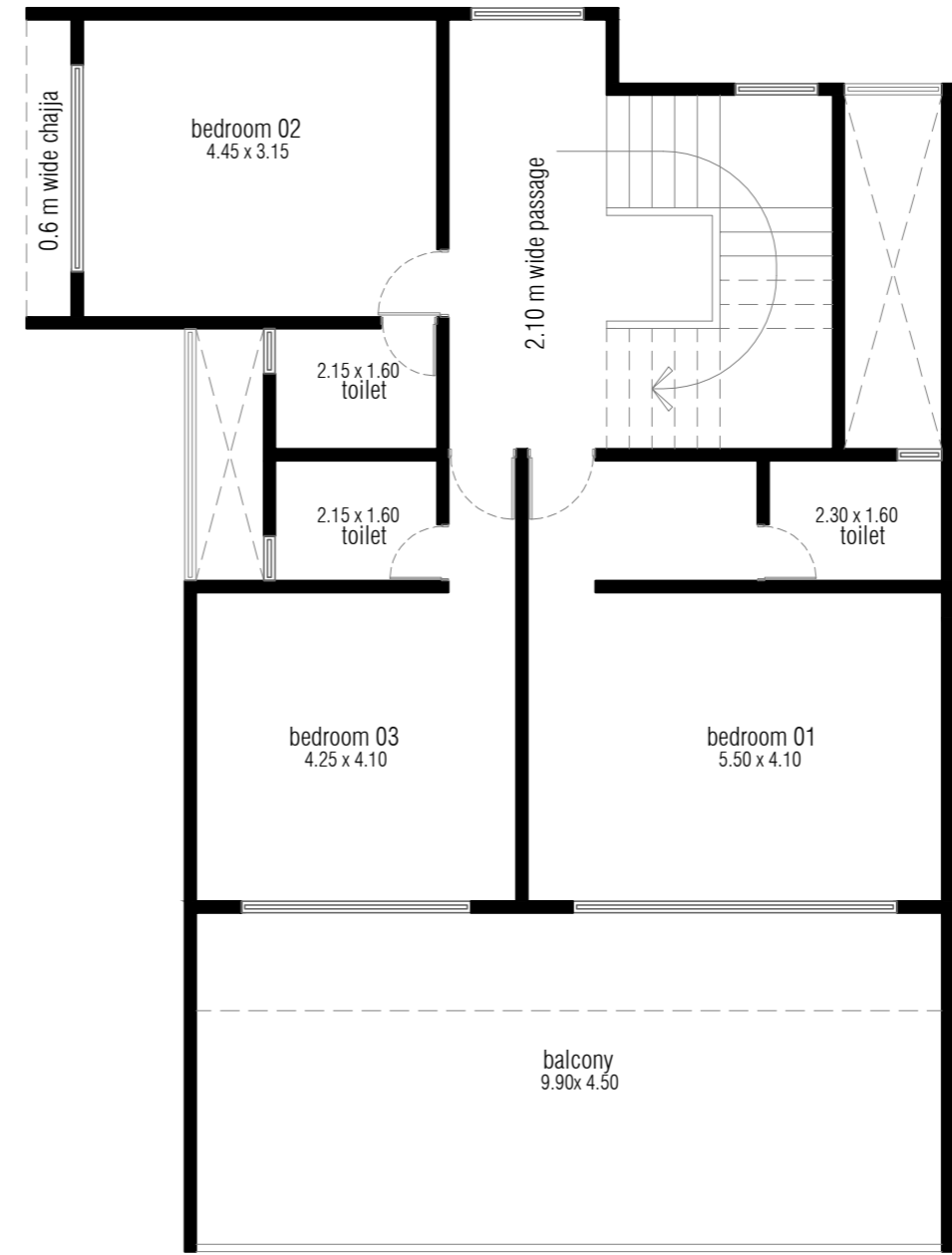
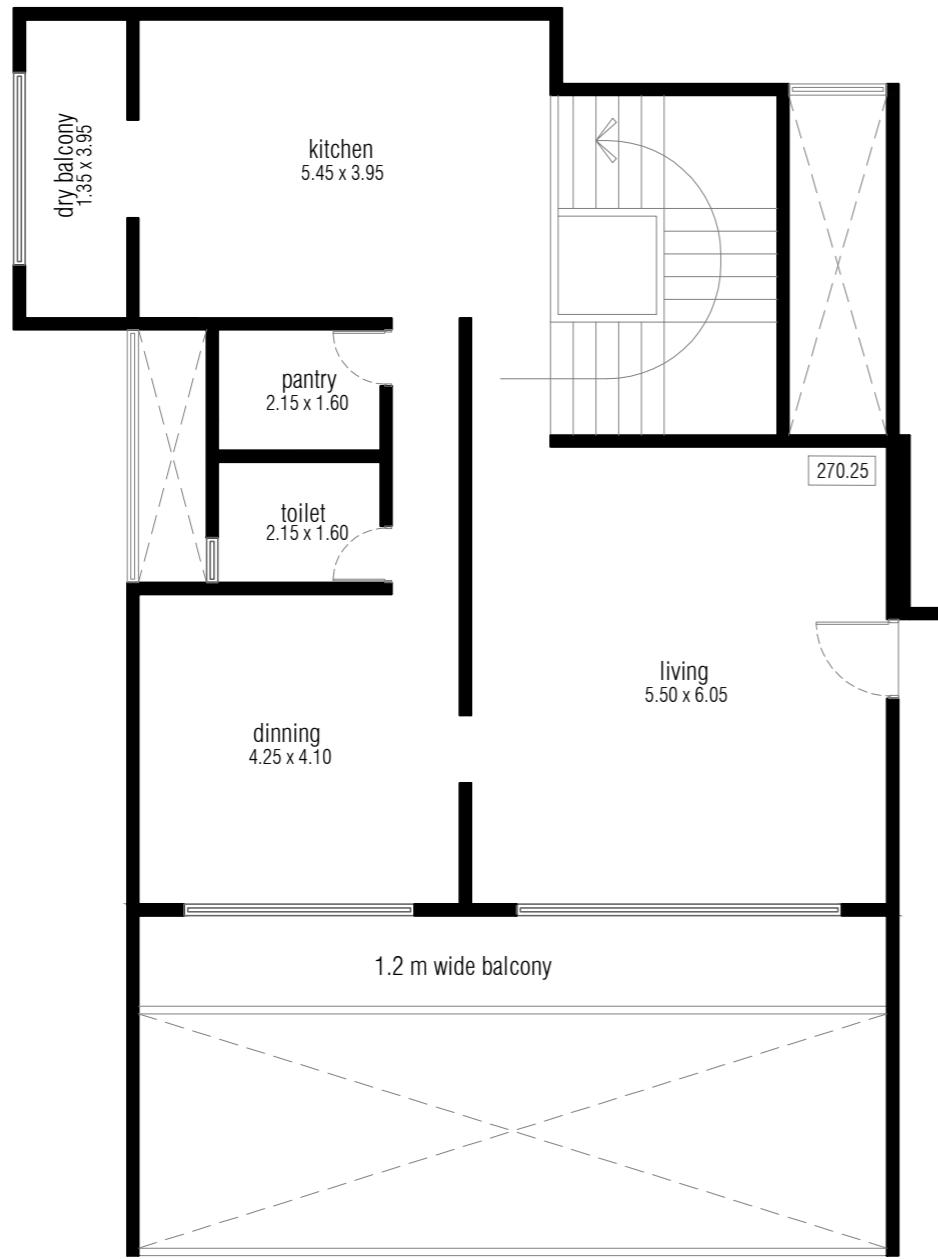


Ground Floor Plan
Scale 1:250

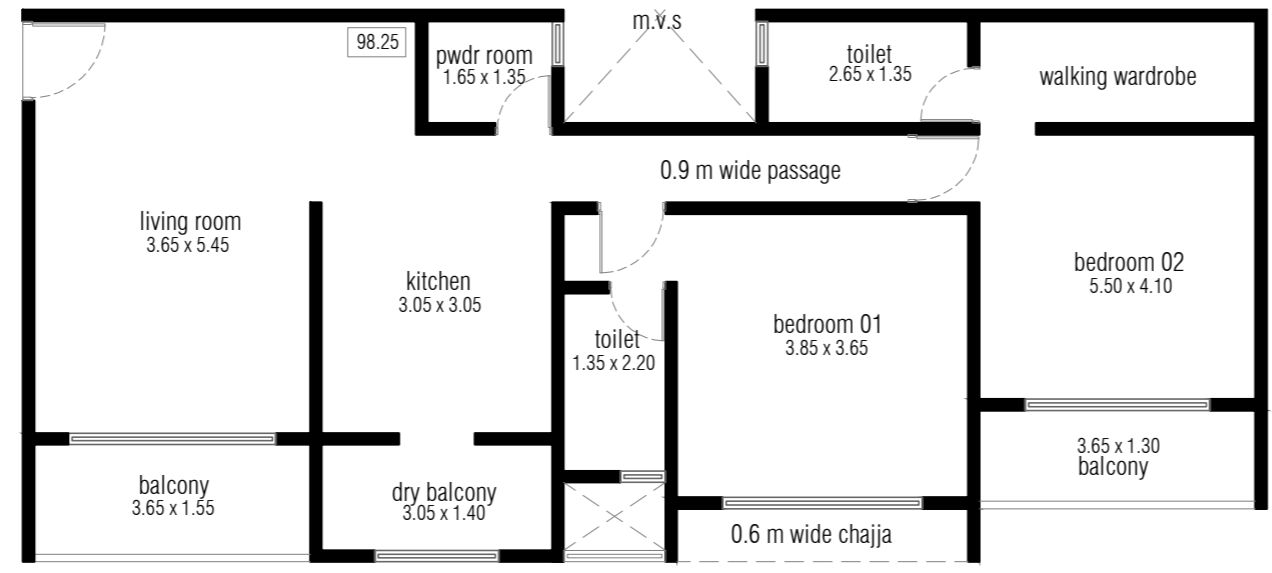




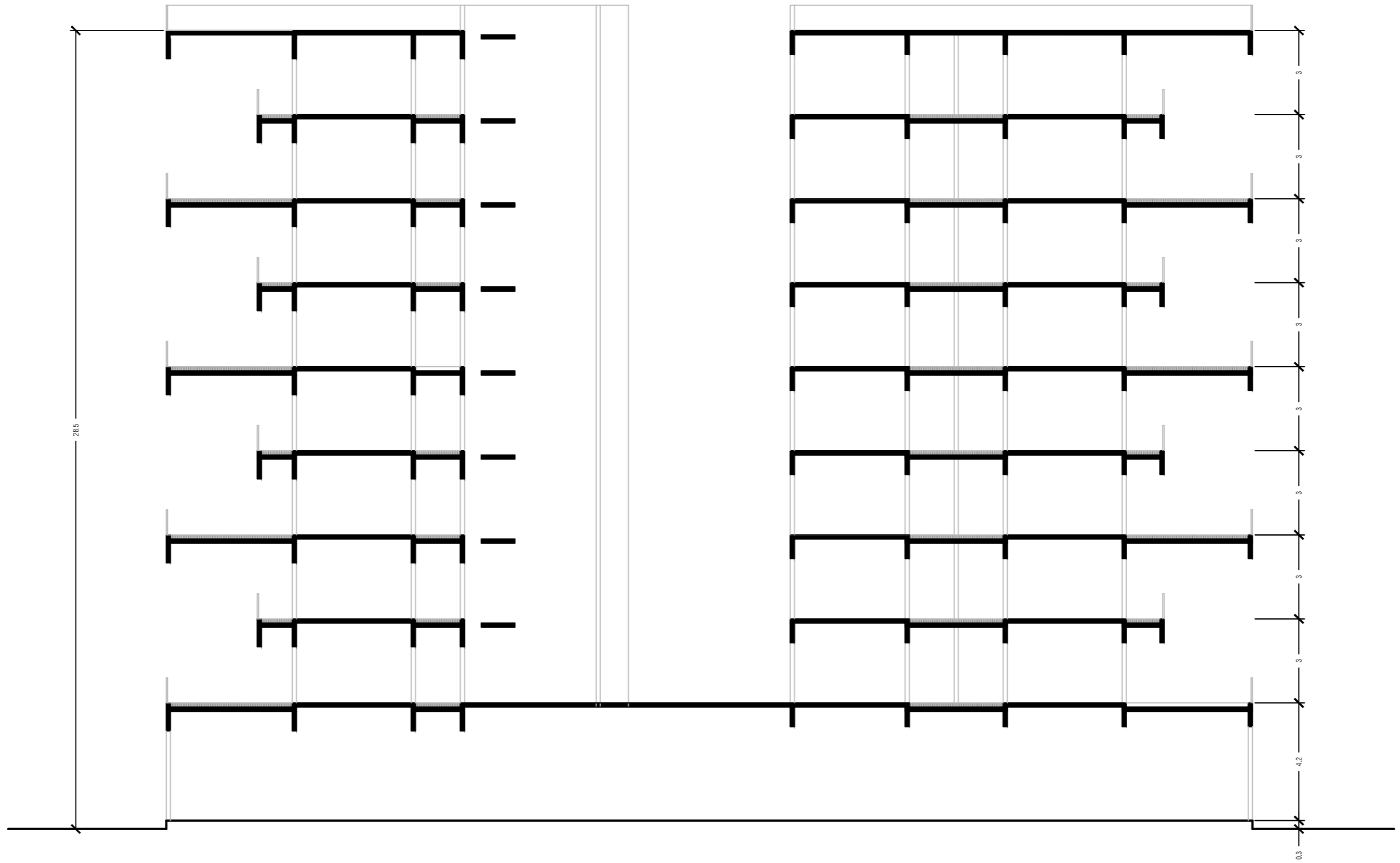
Typical Even Floor Plan
Scale 1:250



3bhk Duplex
Scale 1:100



2bhk
Scale 1:100



Section
Scale 1:150

Permissible Built Up Area = 12123 Sq. m			
Building 1		Building	
Floor	Built Up Area	Floor	Built Up Area
1st Floor	663.24	1st Floor	663.24
2nd Floor	663.24	2nd Floor	663.24
3rd Floor	663.24	3rd Floor	663.24
4th Floor	663.24	4th Floor	663.24
5th Floor	663.24	5th Floor	663.24
6th Floor	663.24	6th Floor	663.24
7th Floor	663.24	7th Floor	663.24
8th Floor	663.24	8th Floor	663.24
Cummalative B.U.A of residential = 10,611.84 Sq. m			
Commercial B.U.A = 500.81 Sq. m			
Total B.U.A of the project = 11,112.65 Sq.m (balc. area = 1010.35)			

SITE AREA = 4490 sq.mt.
ROAD WIDTH - 24 mt.
LOCATION - Preranarirth Road, Jodhpur, Ahemdabad
RECREATIONAL GROUND (R.G) to be left out = 15% of site area
F.S.I. = 2.7 (1.8+0.9)
Permissible Built up = 12,123 sq.mt
Height Restriction = 45 mt.
Open Spaces (Margin) - 6mt. road side - 4.5 mt. rear side
Parking allotment - 1:1 (Each unit 1 parking)
PERMISSIBLE HEIGHT - 45 mt.
<i>Cosnidering that:</i> Ground Floor- 4.2 mt. Residential typical floor- 2.9 mt.
Total Floors- G+14 (Max.)
<i>Taking into consideration market requirements the proposal includes 4BHK & 3BHK typologies.</i>
approx, Built up area per floor - 932.00 sq.mt.